

# SPIG-LITE

advanced

0.74kN SPIG based BALUSTRADE



Exclusively available from Elite Glass Solutions



Fully adjustable  
spigot-based  
frameless glass  
balustrade  
for domestic  
installations

A photograph of a modern building at dusk. The building features a mix of materials: a textured stone wall on the left, a light-colored smooth wall with two small square windows below it, and a large glass window on the right. The interior lights are on, creating a warm glow. The sky is a deep blue, and the foreground shows a grassy area. A large, semi-transparent blue triangle is overlaid on the right side of the image, serving as a background for the text.

“SPIG-LITEadvanced  
gives a sleek and  
contemporary look  
to my balcony”

Homeowner, Ireland



SPIG-LITEadvanced is extremely simple and cost-effective to install due to it being spigot-based, as opposed to a full channel configuration.

Without a channel, there is a greater percentage of glass visible to maximise your view. The individual spigots allow water to flow freely making them perfect for wet areas such as poolside or an exposed balcony, keeping the glass out of submersion.

Mechanised by two-sided screw-clamp technology, each individual panel of glass in the SPIG-LITEadvanced system can be horizontally adjusted once in position, providing an accurate installation and a flawless finish.

Ideal for single family domestic dwellings where up to 0.74kN force loading capability is required.



#### FAST AND EASY TO INSTALL AND ADJUST

One of the most simple balustrade systems to fit and adjust thanks to its patented screw-clamp technology. Dry glazed where no specialist tools are required. Glass can easily be removed and replaced if required.

#### ACCREDITED TO 0.74kN TO BS 6180:2011

SPIG-LITEadvanced is accredited and approved by multiple organisations to verify that it meets national and international building regulations for use as edge protection, where up to 0.74kN force loading is required.

#### SUITABLE FOR A RANGE OF GLASS TYPES

SPIG-LITEadvanced can be used with a range of glass types and thicknesses from 12mm toughened to 21.5mm PVB. It is the different glass types which allow SPIG-LITEadvanced to resist varying line loads, up to 0.74kN.

#### SMALL AND COMPACT SYSTEM

The SPIG-LITEadvanced balustrade system can be packed into boxes making it simple and cost-effective to store and despatch. On a large installation, this can save a great deal of time and money!

#### HARD WEARING

SPIG-LITEadvanced has been precision engineered to provide incredible strength, for a lightweight and compact balustrade system. For additional protection from the elements SPIG-LITEadvanced spigots are anodised to 25 microns.

#### HIGHLY ADJUSTABLE

SPIG-LITEadvanced benefits from two-sided screw-clamp technology that provides a 2° adjustment angle on either side of the glass, enabling perfect alignment of each glass panel, even when being installed onto an uneven surface.



#### EXTERIOR BALUSTRADE

- ✓ Balcony balustrade
- ✓ Terrace windbreak
- ✓ Garden screening



#### SWIMMING POOL FENCING

- ✓ Pool safety barrier
- ✓ Glass walkway
- ✓ Splash barrier



#### INTERIOR BALUSTRADE

- ✓ Mezzanines
- ✓ Staircases
- ✓ Glass partitions



“SPIG-LITE advanced  
is both easy and  
cost-effective to  
install and adjust  
thanks to its spigot  
based technology”

Installer, Brighton



Installed by Veon Ltd ([www.veonglass.com](http://www.veonglass.com))

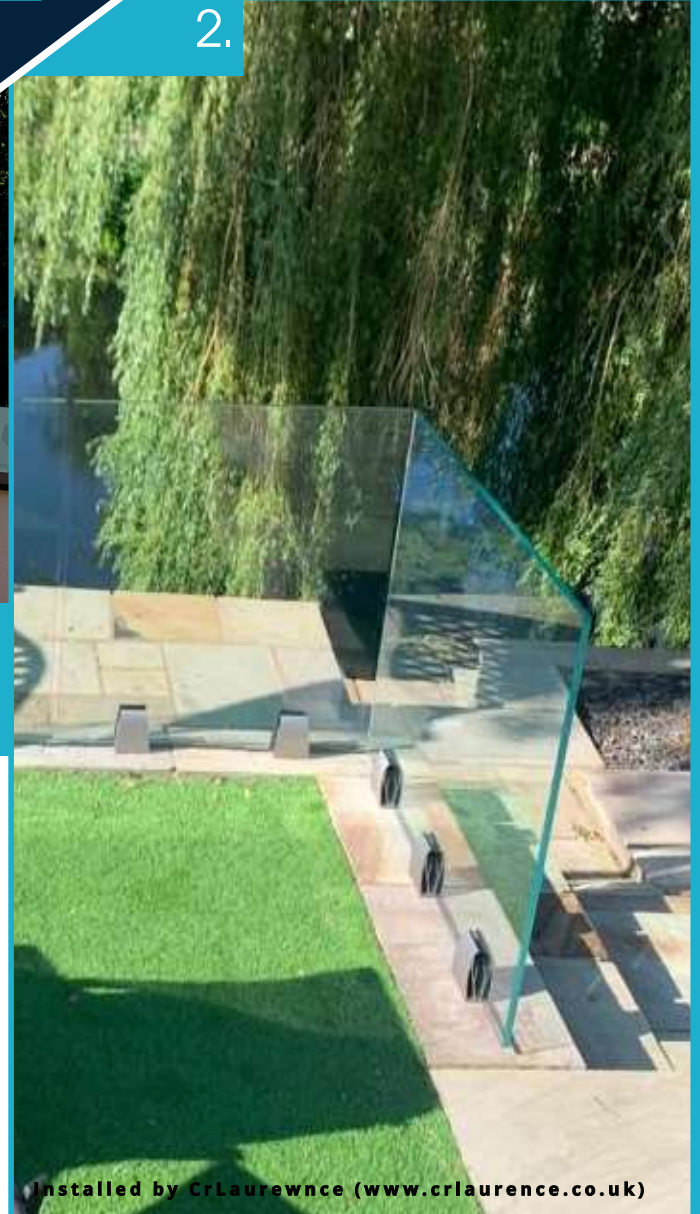
# SPIG-LITEadvanced

## INSTALLATION GALLERY

1.  
2.



3.  
4.



Installed by CrLaurence ([www.crlaurence.co.uk](http://www.crlaurence.co.uk))





Installed by Veon Ltd ([www.veonglass.com](http://www.veonglass.com))

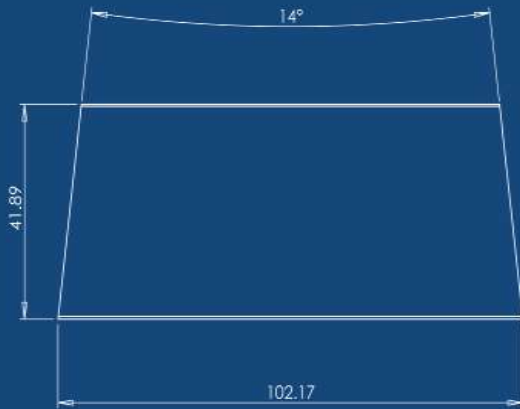
5.



Installed by SG Custom Welding (07961096021)

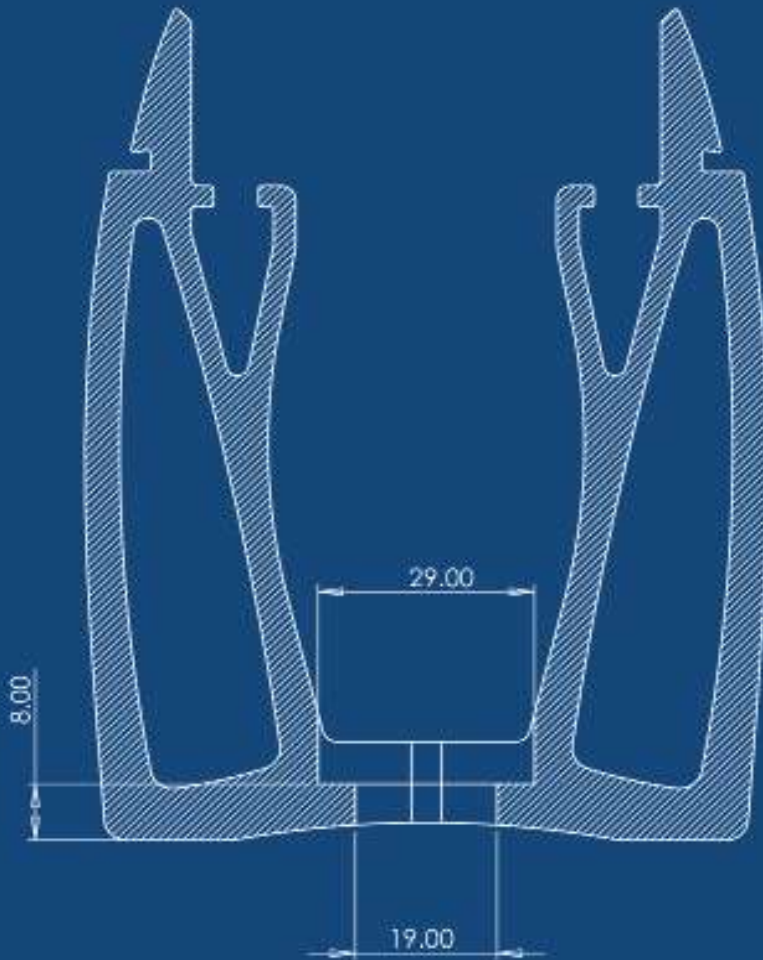
6.

1. Domestic balcony balustrade
2. Domestic balcony windbreak with no end caps
3. Domestic dwarf balcony
4. SPIG-LITE advanced graphite grey samples with glass
5. Domestic balcony windbreak
6. Domestic balcony windbreak



3.

4.



1. SPIG-LITEadvanced  
aerial view of spigot and  
bolt hole

2. SPIG-LITEadvanced  
spigot and top bead  
profile

3. SPIG-LITEadvanced top  
bead dimensions

4. SPIG-LITEadvanced  
spigot only profile  
dimensions

“SPIG-LITEadvanced  
is an unrivalled  
product  
in its ability to make  
the best of a  
stunning view”

Architect, Cornwall

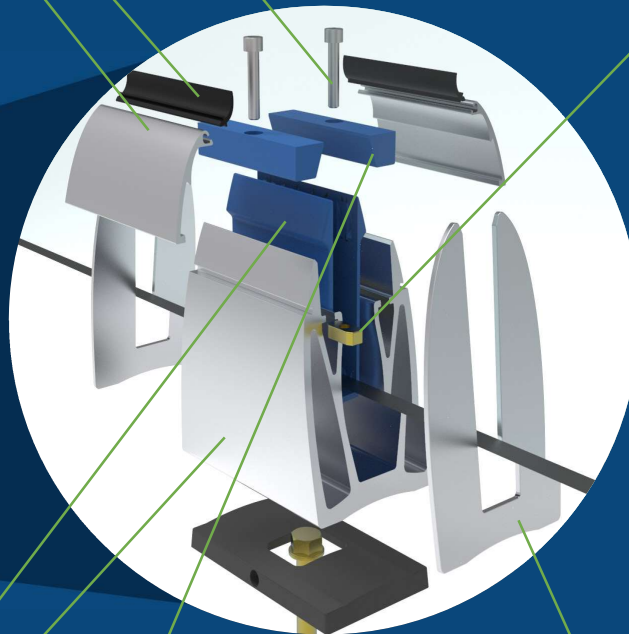


SPIG-LITEadvanced Top Bead

SPIG-LITEadvanced  
Co-Extruded Gasket

SPIG-LITEadvanced Cap  
Screw

SPIG-LITEadvanced  
Rectangular Nut



SPIG-LITEadvanced  
Clamp Bars

SPIG-LITEadvanced  
Graphite Grey Spigot

SPIG-LITEadvanced Glass  
Clamp

SPIG-LITEadvanced  
End Cap



### SPIG-LITEadvanced Graphite Grey Spigot Kit

You can buy SPIG-LITEadvanced as a complete kit suitable for a one-metre installation.



### SPIG-LITEadvanced Clamp Kit

The simple glass clamping mechanism that facilitates easy installation and glass alignment.



### SPIG-LITEadvanced Top Bead & Co-Extruded Gasket

Top bead and gasket create a tidy finish whilst helping to prevent water and debris from getting inside the spigots.



### SPIG-LITEadvanced BALCONYseal®

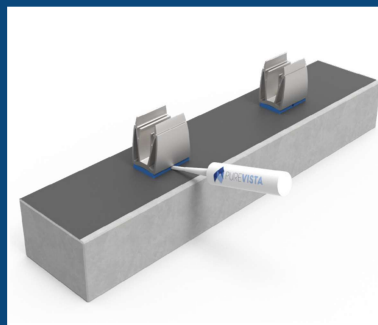
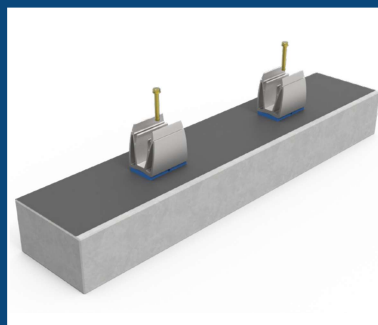
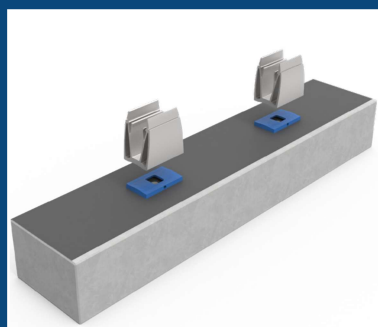
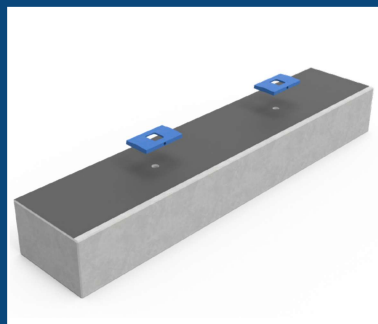
A revolutionary product that provides a solution to waterproofing on an exterior balcony installation.

**BALCONYseal® is a revolutionary product which provides a robust waterproofing system for your exterior SPIG-LITEadvanced balustrade installation.**

Whether you're retro-fitting balustrade to an existing balcony or installing to a new build, careful consideration should be taken to prevent water ingress into the fabric of the building. Typically, this will happen for two reasons; firstly, if no appropriate water drainage solution is in place and secondly, if the balustrade fixing points have not been properly sealed.

SPIG-LITEadvanced benefits from having natural water drainage points between each of the spigots. However, there is a risk of creating water infiltration points under the spigots if BALCONYseal® is not used.

The BALCONYseal® system works by subtly raising the SPIG-LITEadvanced spigots a few millimeters above the substrate on drain blocks which are then bolt-fixed through each block. The drain blocks are then filled with sealant, to create a watertight installation.



A photograph of a modern, two-story house at night. The house has a white facade and large windows, some of which are illuminated from within. A blue semi-transparent overlay covers the upper portion of the image, containing a quote in white text. The background shows a dark blue sky and some trees. The overall mood is serene and modern.

“SPIG-LITEadvanced  
is fast and easy to  
install saving us time  
and money”

Contractor, Birmingham



**SPIG-LITEadvanced is simple to install and adjust thanks to its patented screw-clamp technology.**

**1. FIT THE SPIGOTS**

Arrange your spigots on the substrate, using two spigots per metre of glass, starting at 250mm from the edge and 500mm apart thereafter. Mark out your drill holes, drill the holes then bolt the spigots into position and tighten until rigid.

**2. CLAMP THE GLASS**

Make up the clamps by slotting the left and right

hand sides together. Slide these onto the bottom edge of the glass, 250mm from the edge and 500mm apart thereafter. Now, insert the glass.

**3. FIT THE ADJUSTMENT MECHANISM**

Place the cap screw through the clamp bar and loosely screw on the rectangular nut. The angled side of the bar should be nearest the glass. Slide the unit in from the side, with the rectangular nut slotting into the top of the 'V' in the profile.

**4. POSITION THE GLASS**

To adjust the glass use a 5mm Hex Key to tighten the screws until the desired position is achieved. Once correct, use a torque wrench to tighten at 6Nm.

**5. ATTACH THE TOP CLIPS**

Insert the gasket into the rebates and cut to size. Then, slide the top clip onto the spigot from either side. Use a dab of neutral cure silicone on the underside of the bead to ensure it won't come off easily.

**6. FIT THE END CAPS**

Adhere the end caps into position using a bead of neutral cure silicone. Simply press into position.



The table below shows the line loading that SPIG-LITEadvanced is certified to achieve.

requirement under this British standard for a range of glass height and thickness configurations.

These tests have been conducted in accordance with **BS6180:2011** to certify that SPIG-LITEadvanced meets the force loading

Glass Type >	12mm Toughened Glass	15mm Toughened Glass	17.5mm Toughened PVB	21.5mm Toughened PVB
Glass Height (mm) >	1200	1200	1200	1200
0.36kN				
0.74kN				
1.50kN				



## Contact Us

1300 4 ELITE

Melbourne

170 Derrimut Drive

Derrimut, VIC 3026

03 9314 6105

[sales@eliteglassolutions.com.au](mailto:sales@eliteglassolutions.com.au)

Adelaide

7 Manfull Street

Melrose Park, SA 5039

08 8253 8700

[sa@eliteglassolutions.com.au](mailto:sa@eliteglassolutions.com.au)