



# Essential Glass

SV-A90



# ESSENTIAL GLASS

## SV-A90

### Technical Details

**ESSENTIAL GLASS - The history and evolution of saheco in a range of systems that offer:**

1. Solutions for high quality, suspended, frameless, sliding glass doors of 90kg.
2. Minimalistic aluminium profile that follows the latest architectural trends.
3. Easy Clamp, the most minimalistic solution available, thanks to its compact cover.
4. SV-A90 is a high-quality system consisting of its clamps and rollers mounted on ball bearings to ensure that they can be used smoothly and silently. The track roller assembly is made of high quality zamak.
5. Softbrake available for smooth and impact-free closing.
6. No machining of the glass is required for any of the applications.
7. Applus certified in accordance with the EN 1527 standard.

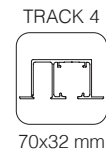
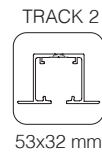
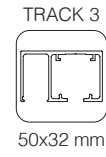
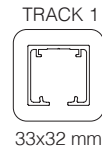




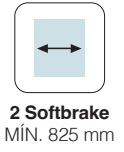
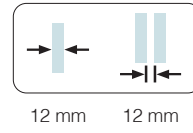
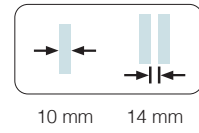
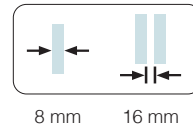
## SV-A90

### Technical characteristics

#### Profiles



#### Specifications



#### Weight

90 kg

198 lb

#### Certificated product



#### Download certificate

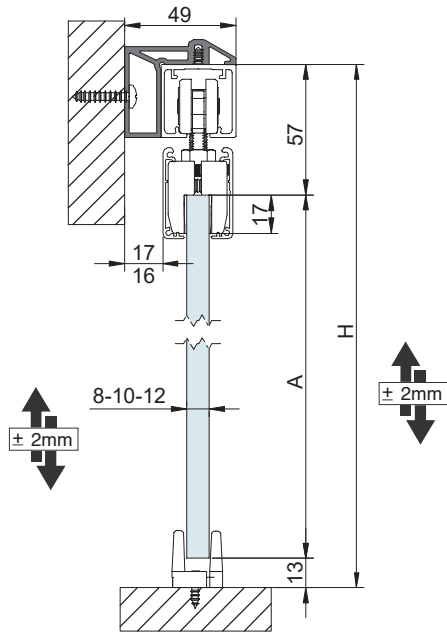




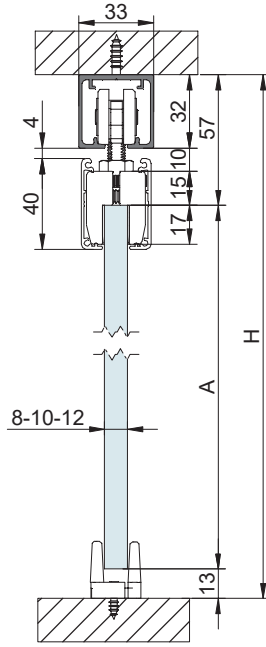
**SV-A90**

Cross-section

TRACK 1 Wall / Ceiling mount

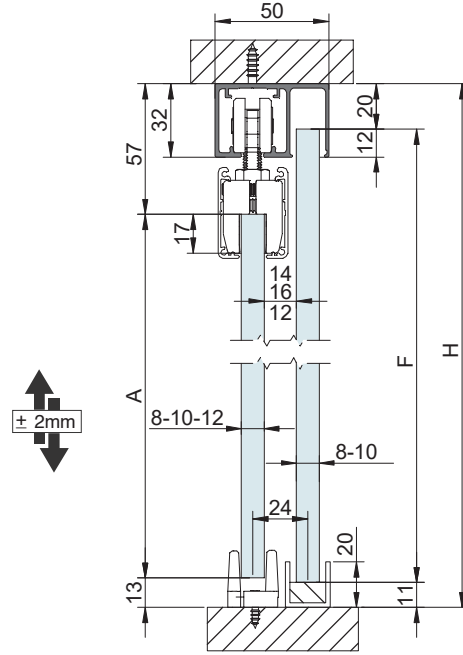


A= H-70    F= H-31



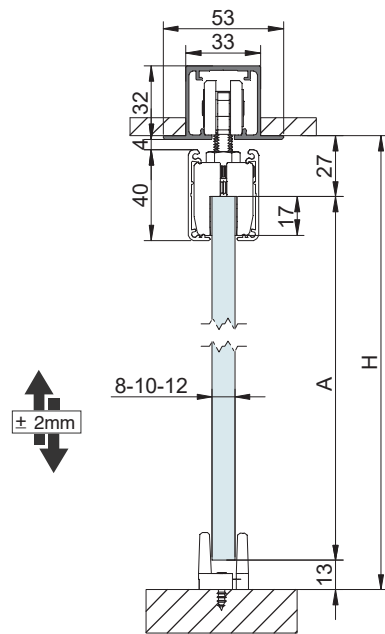
A= H-70

TRACK 3 Ceiling mount with fixed panel



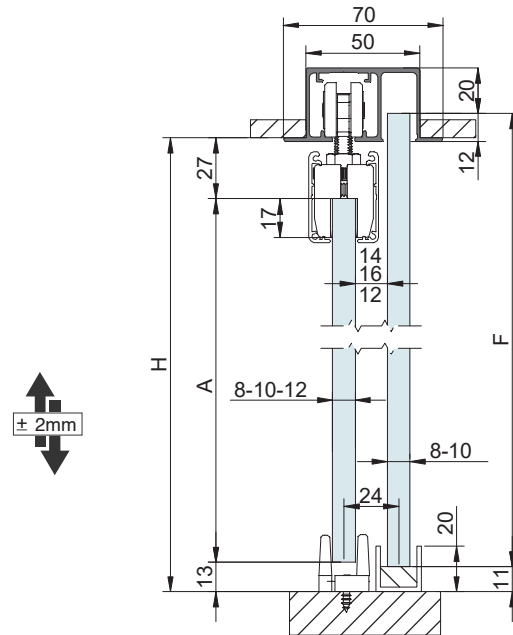
A= H-70    F= H-31

TRACK 2 False ceiling mount



A= H-40

TRACK 4 False ceiling mount with fixed panel

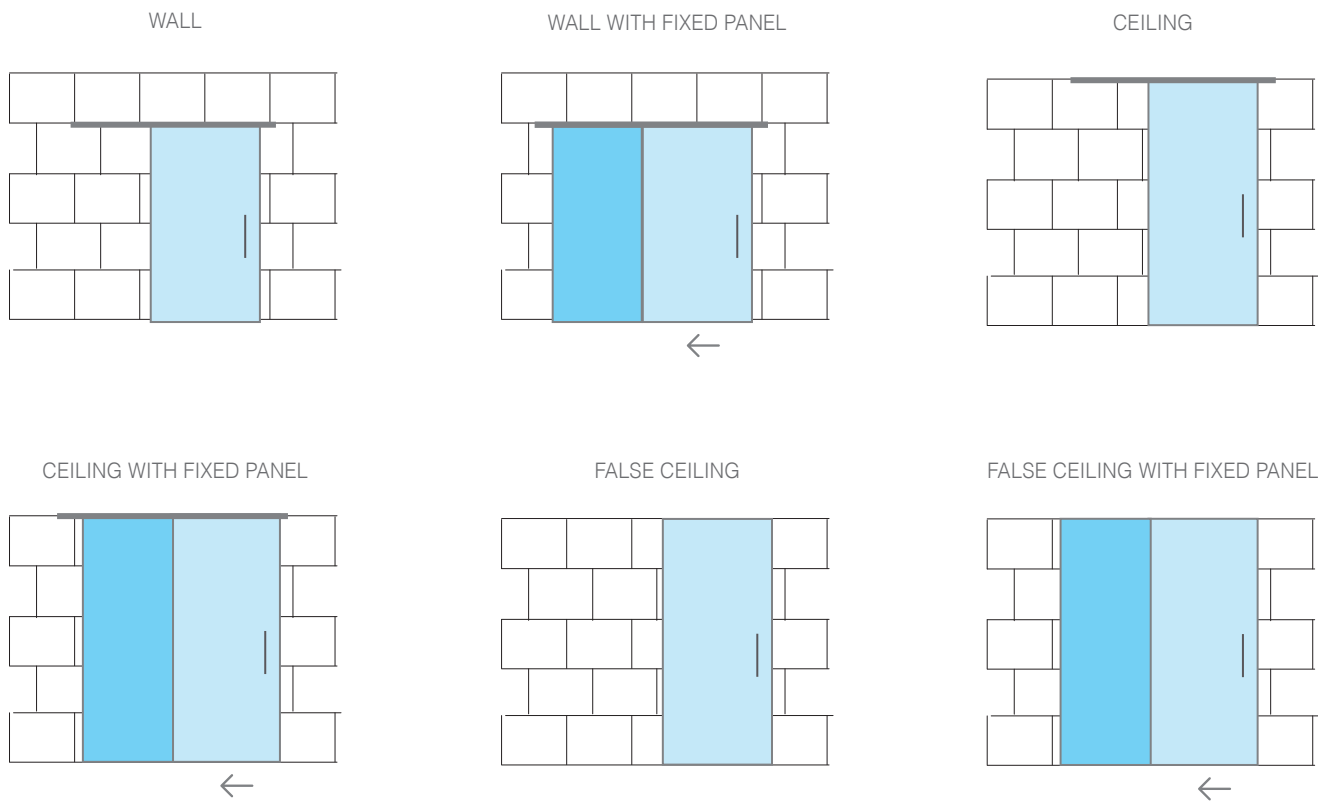


A= H-40    F= H



**SV-A90**

Installation possibilities



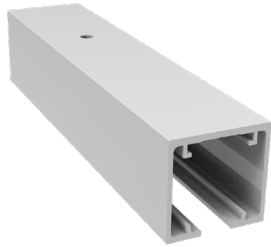
-  SLIDING DOOR
-  FIXED GLASS



**SV-A9**

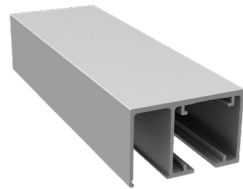
Components

**TRACK OPTIONS**



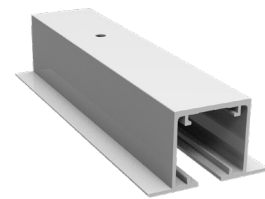
33x32mm

**SV-A90 - TRACK 1**  
Wall / Ceiling mount



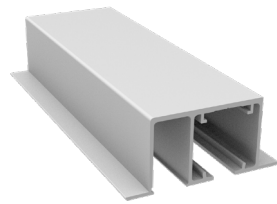
50x32mm

**SV-A90 - TRACK 3**  
Ceiling mount  
with fixed glass



53x32mm

**SV-A90 - TRACK 2**  
False Ceiling mount



70x32mm

**SV-A90 - TRACK 4**  
False Ceiling mount  
with fixed glass



49x43mm

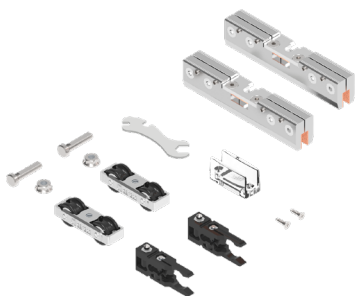
**SV-A90 - SEPARATOR  
TRACK 1**  
Wall mount



17x4mm

**SV-A90 - TRIM FOR FIXED  
GLASS TRACK 3 AND 4**

**BRAKE OPTIONS**



**SV-A90 - SET 1**  
x2 Retaining stopper  
(Standard Stoppers)



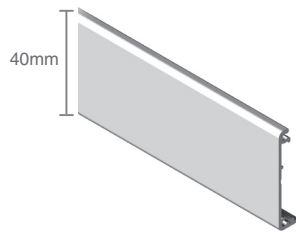
**SV-A90 - SET 2**  
x1 Soft close



**SV-A90**

Components

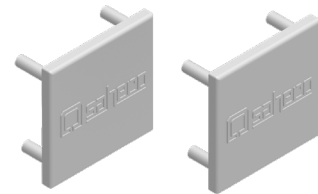
**ACCESSORIES**



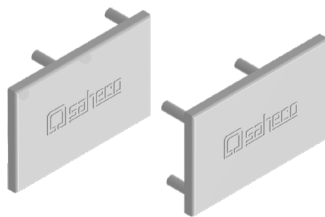
**SV-A90 - EASY CLAMP  
PELMET COVER**



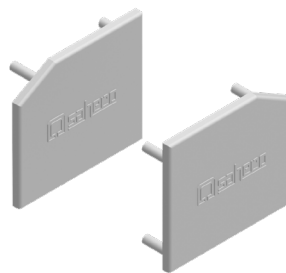
**SV-A90 - EASY CLAMP  
LATERAL CAPS**  
8 / 10 / 12mm glass thickness



**SV-A90 - END CAPS TRACK 1**  
Wall / Ceiling mount



**SV-A90 - END CAPS TRACK 3**  
Ceiling mount with fixed glass



**SV-A90 - END CAPS TRACK 1  
WITH SEPARATOR TRACK**  
Wall mount

# Essential Glass

SV-A90



Polígono Industrial de Foradada / 08580  
St. Quirze de Besora / Barcelona / Spain  
T +34 93 852 96 15  
export@saheco.com  
[saheco.com](http://saheco.com)



**Saheco's Exclusive Distributor**  
**Melbourne Office**  
170 Derrimut Drive Derrimut Vic 3030

Tel. 1300 4 ELITE  
sales@eliteglasssolutions.com.au  
[eliteglasssolutions.com.au](http://eliteglasssolutions.com.au)

**Adelaide Office**  
7 Manfull St. Melrose Park SA 5039