



Compact Glass

SV-Sincro X110



MULTIPL COMPACT GLASS

INSTALLATION
VIDEO



SV-Sincro X110

Technical Details

The multiplo compact glass range is the best choice for closing large spaces with multiple glass panels, while ensuring an attractive minimalistic design thanks to all components being concealed within the top track, providing a complete frameless installation.

The SV-Sincro X110 system is designed to close spaces with two synchronized panels, these opening and closing simultaneously. Suitable with glass thickness of 10 mm and 12 mm, with an easy installation of the glass with no machining required (template or laminate), and with a weight capacity of 110kg per panel.

In addition, it incorporates as a novelty **SOFTPRO** technology by Saheco, a braking system that brings greater smoothness and safety with a soft opening and closing of the installation.

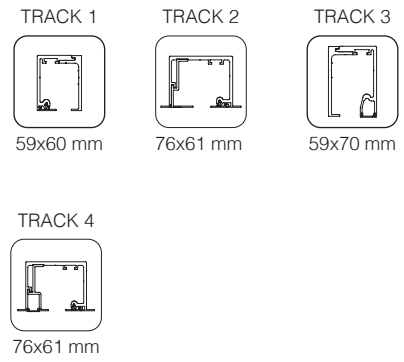
The system has been tested in 100,000 cycles according to European regulations EN1527 / EN1670.



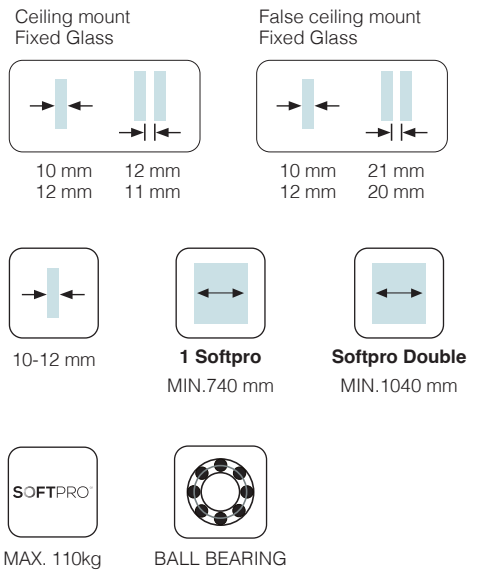


SV-Sincro X110
 Technical characteristics

Profiles



Specifications



Weight



Certificated product

Download certificate

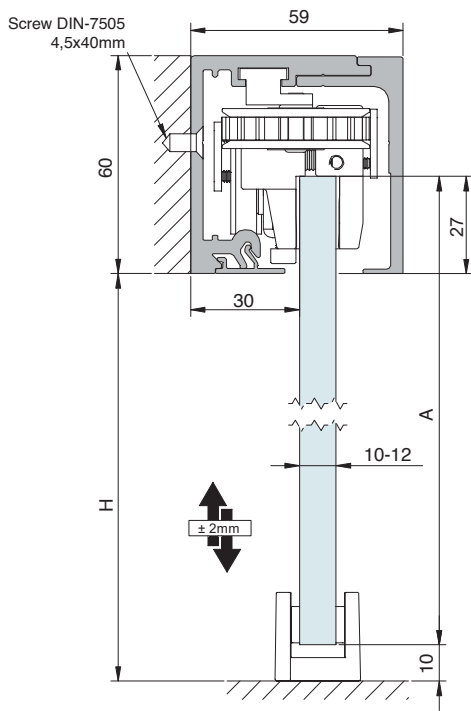




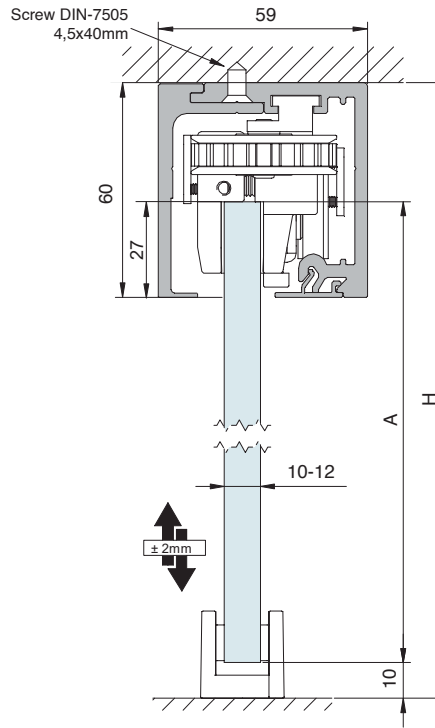
SV-Sincro X110

Cross-section

TRACK 1 Wall / Ceiling mount

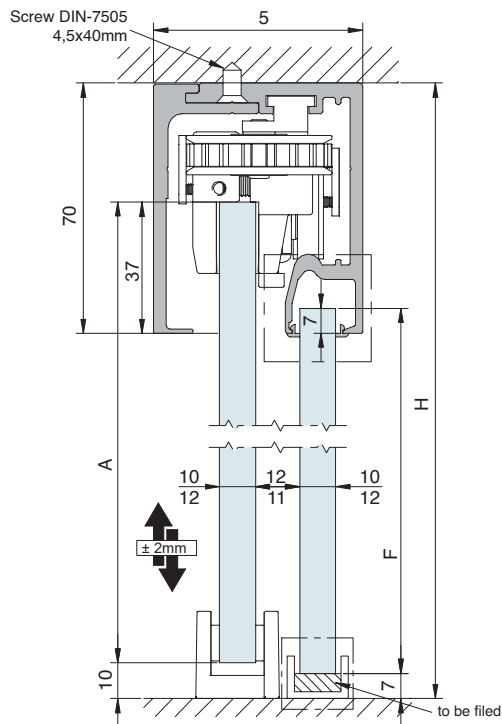


$A = H + 17$



$A = H - 43$

TRACK 3 Wall / Ceiling mount with fixed panel



$A = H - 43$

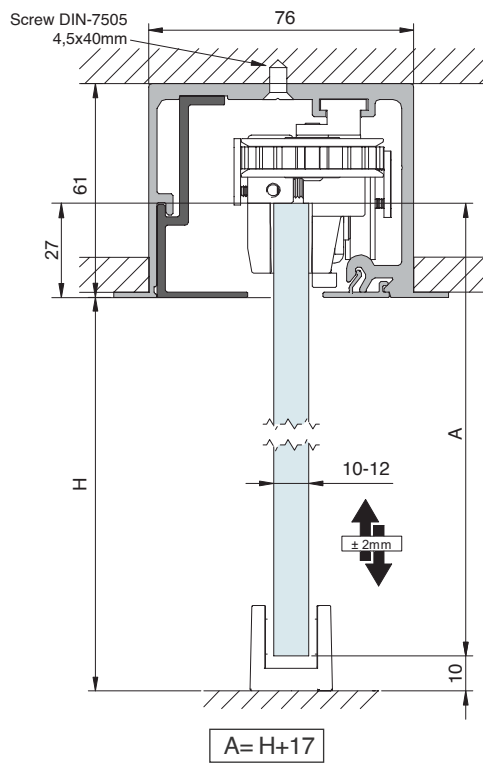
$F = H - 70$



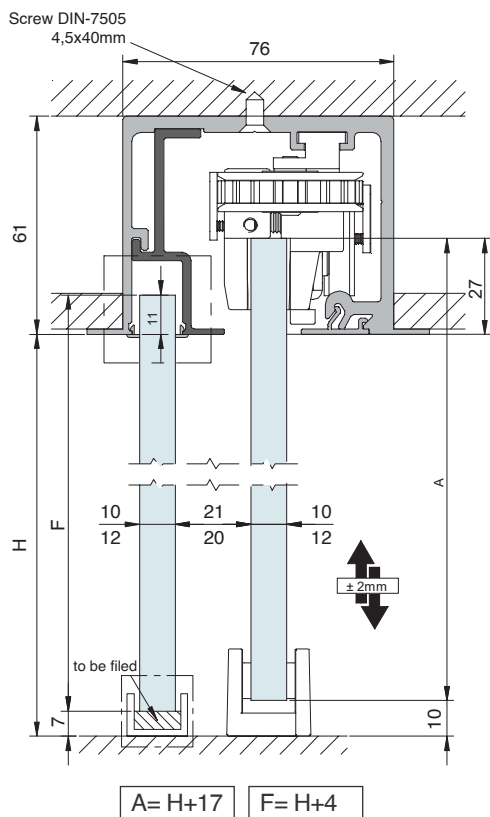
SV-Sincro X110

Cross-section

TRACK 2 False ceiling mount



TRACK 4 False ceiling mount with fixed panel



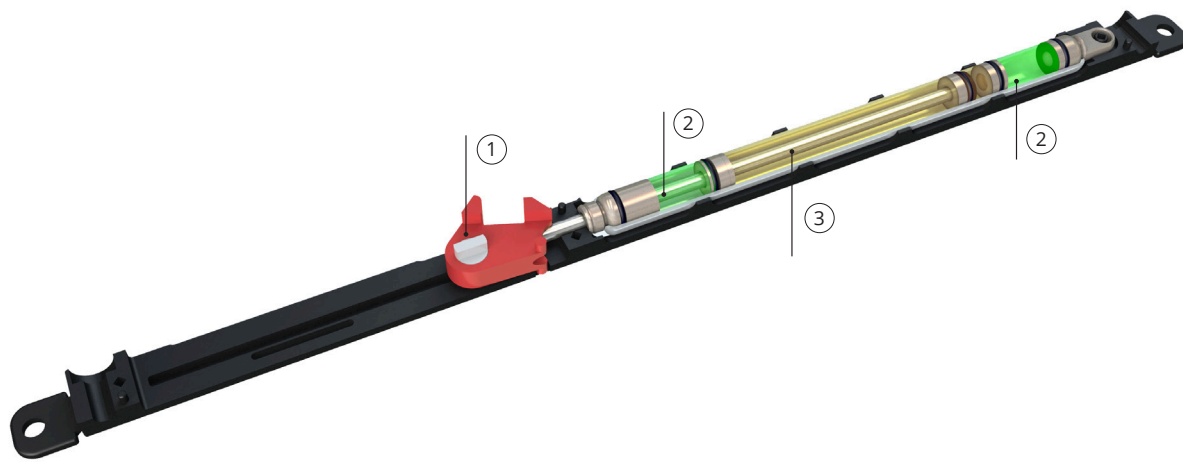


SOFTPRO[®]

TECHNOLOGY by Saheco

The new soft-closing technology from Saheco which combines two nitrogen gas filled pistons and one oil filled piston all within the same unit.

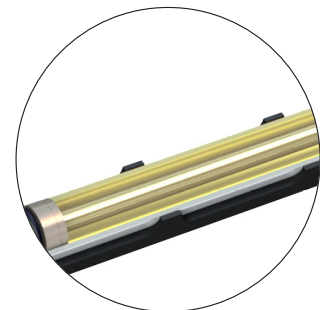
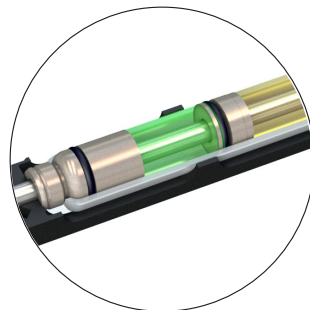
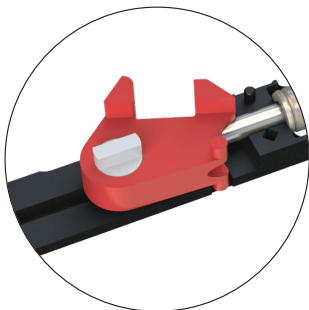
1. Fully adjustable closing speed. 2. Closing action is progressive and slows down as the door approaches the fully closed position. 3. Soft Closing. 4. Anti break feature on the trigger. 5. Ensures safe braking and prevents the bouncing of the door. 6. Combines an aesthetically pleasing action with safe soft closing for the last 65mm of the door's travel into the fully closed position for door weights up to 110Kg .



① Anti break trigger

② Nitrogen gas filled pistons

③ Oil filled piston

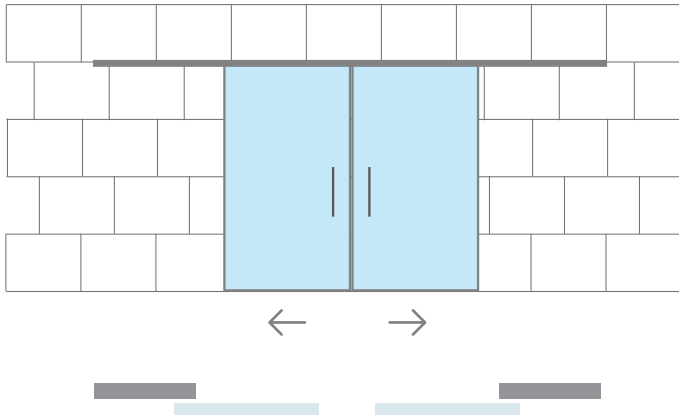




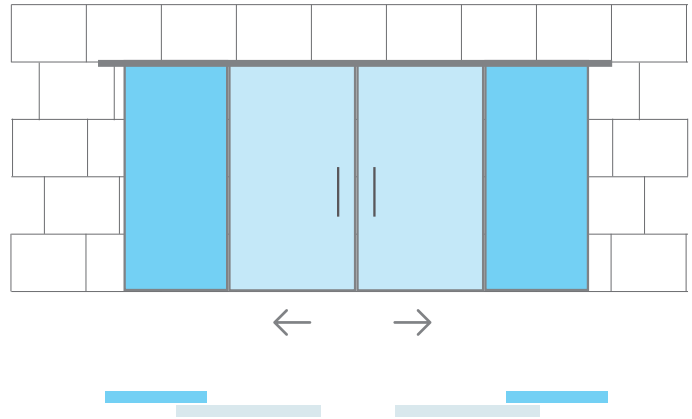
SV-Sincro X110

Installation possibilities

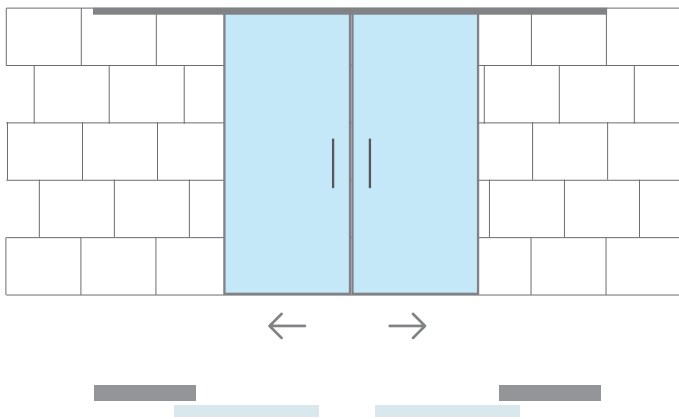
WALL



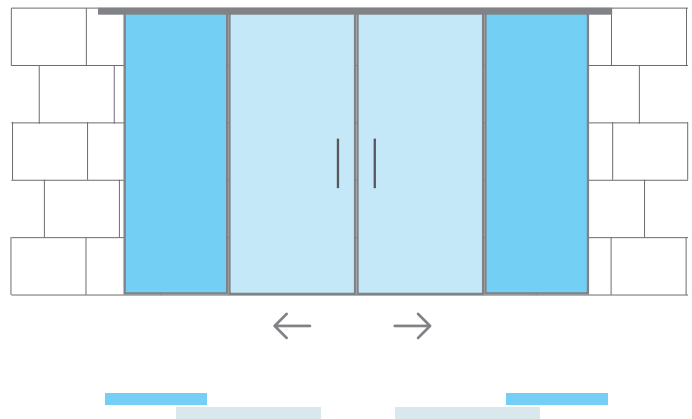
WALL WITH FIXED PANEL



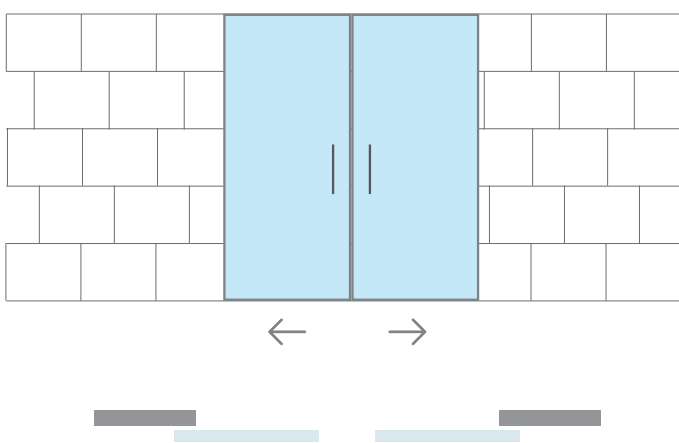
CEILING



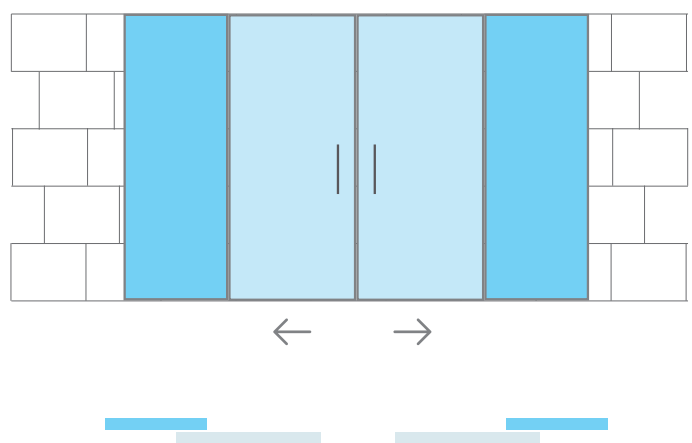
CEILING WITH FIXED PANEL



FALSE CEILING



FALSE CEILING WITH FIXED PANEL



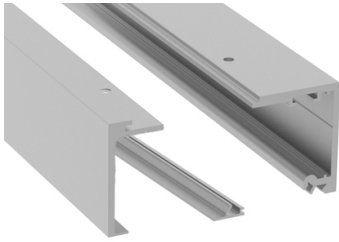
 SLIDING DOOR  FIXED GLASS



SV-Sincro X110

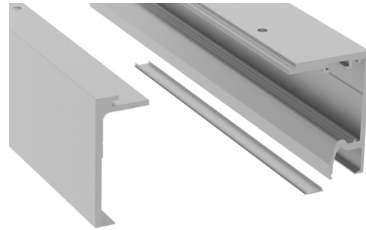
Components

TRACK OPTIONS



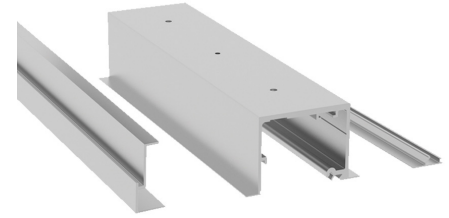
59x60mm

SV-X110 - TRACK 1
Wall / Ceiling mount



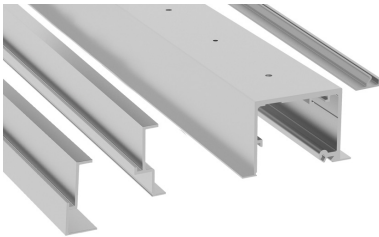
59x70mm

SV-X110 - TRACK 3
Wall / Ceiling mount
with fixed panel



76x61mm

SV-X110 - TRACK 2
False ceiling mount
without fixed panel



76x61mm

SV-X110 - TRACK 4
False Ceiling mount
with/without fixed panel

Available Finishes

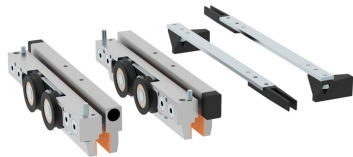
- **SI** Satin anodized aluminium
- **BL I** Matt black lacquered aluminium
- **WL I** Matt white lacquered aluminium
- **BS I** Stainless steel brushed finish aluminium



SV-Sincro X110

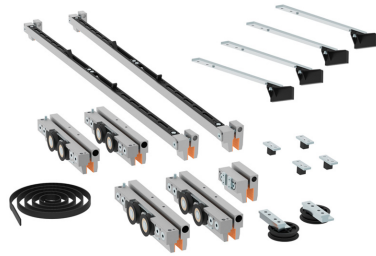
Components

BRAKE OPTIONS



SV-Sincro X110 - SET 1

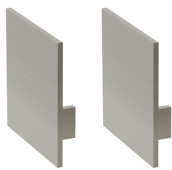
x2 Retaining stopper. 110kg per panel.
(Standard Stoppers)



SV-Sincro X110 - SET 10

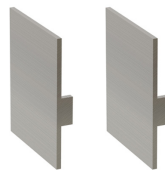
x2 Double Softpro. 110kg per panel.

ACCESSORIES



SV-Sincro X110 - END CAPS TRACK 1

Wall / Ceiling mount



SV-Sincro X110 - END CAPS TRACK 3

Wall / Ceiling mount with fixed panel



SV-X-FG

Floor Guide

Available Finishes

- **SI** Satin anodized aluminium
- **BL** Matt black lacquered aluminium
- **WL** Matt white lacquered aluminium
- **BSI** Stainless steel brushed finish aluminium

Multiplo Compact Glass

SV-Sincro X110



Polígono Industrial de Foradada / 08580
St. Quirze de Besora / Barcelona / Spain
T +34 93 852 96 15
export@saheco.com
saheco.com

Saheco's Exclusive Distributor
Melbourne Office
170 Derrimut Drive Derrimut Vic 3030

Tel. 1300 4 ELITE
sales@eliteglasssolutions.com.au
eliteglasssolutions.com.au

Adelaide Office
7 Manfull St. Melrose Park SA 5039