



Multiplo Compact Glass

SV-T-PRO X110



MULTIPL COMPACT GLASS

INSTALLATION
VIDEO



SV-T-PRO X110

Technical Details

The multiplo compact glass range is the best choice for closing large spaces with multiple glass panels.

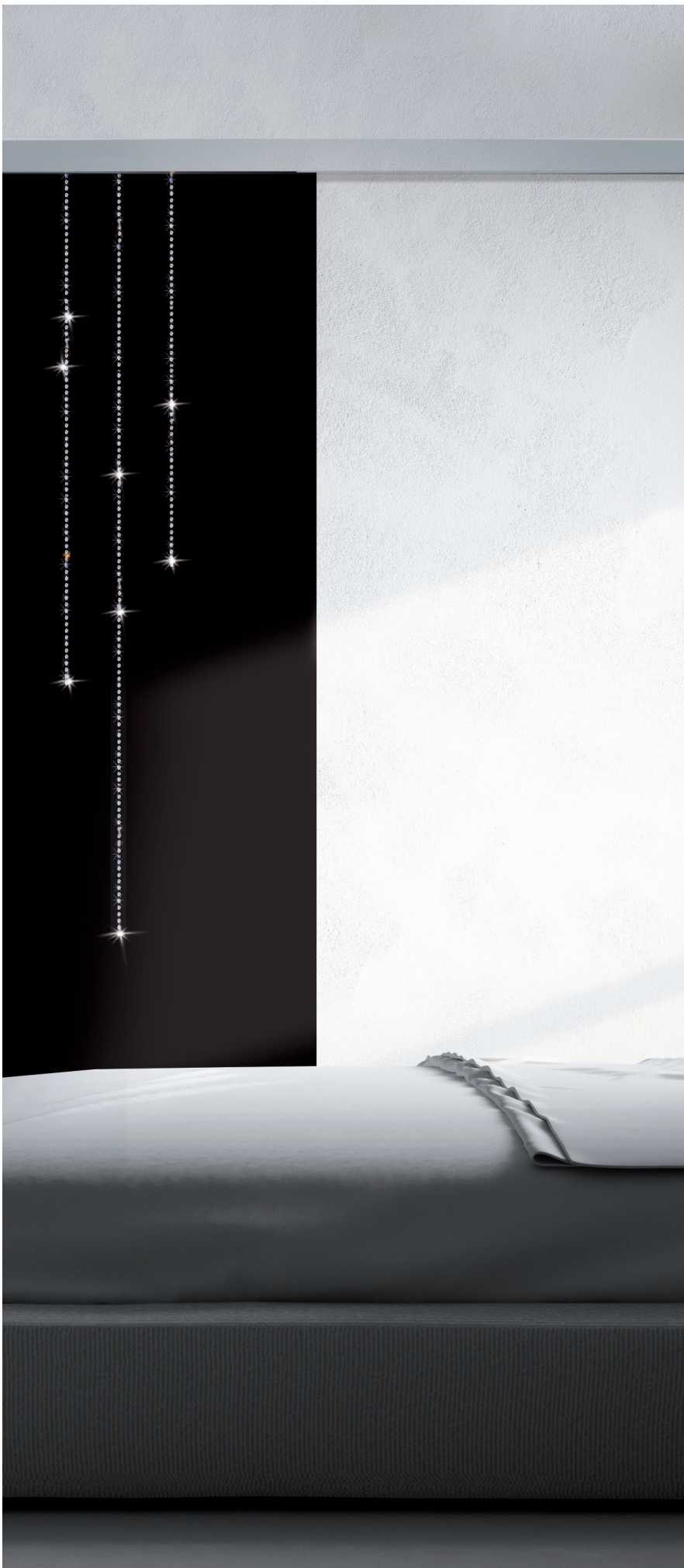
The SV-T-PRO X110 is a telescopic system for glass sliding doors, of up to 110 kg per panel and two panels per side. The system allows to progressively drag the panels to either the left or right side, easily and effortlessly.

The minimalistic appearance of the system is not only thanks to the compact top track but also to its floating telescopic guide, which leaves the passage area completely free of obstacles.

In addition, it incorporates as a novelty **SOFTPRO** technology by Saheco, a braking system that brings greater smoothness and safety with a soft opening and closing of the installation.

The system has been tested in 100,000 cycles according to European regulations EN1527 / EN1670.



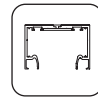


SV-T-PRO X110

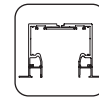
Technical characteristics

Profiles

TRACK 1 (10mm Glass)



103x70 mm
Ceiling



103x87 mm
False ceiling

TRACK 2 (12mm Glass)

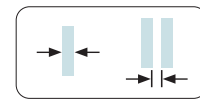


107x70 mm
Ceiling



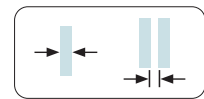
107x87 mm
False ceiling

Specifications

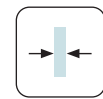


10-12 mm 20 mm

Fixed Glass



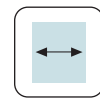
10 mm 12 mm
12 mm 11 mm



10-12 mm



1 Softpro
MIN. 672 mm



Softpro Double
MIN. 970 mm



MAX. 110kg



BALL BEARING

Weight

110 kg

242 lb

Certificated product



Download certificate

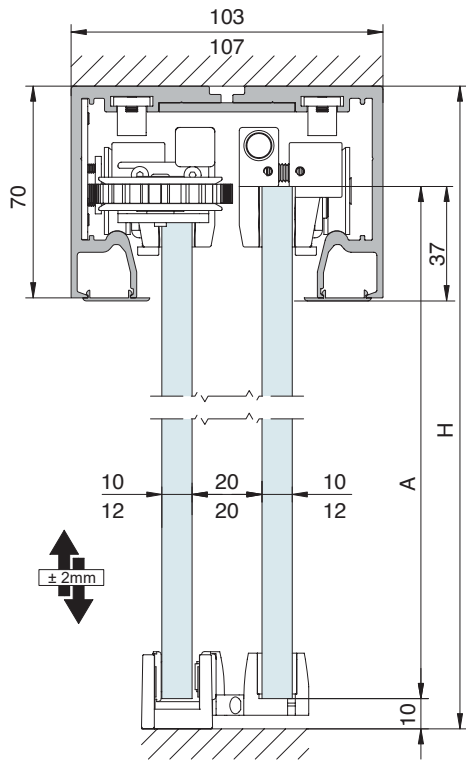




SV-T-PRO X110

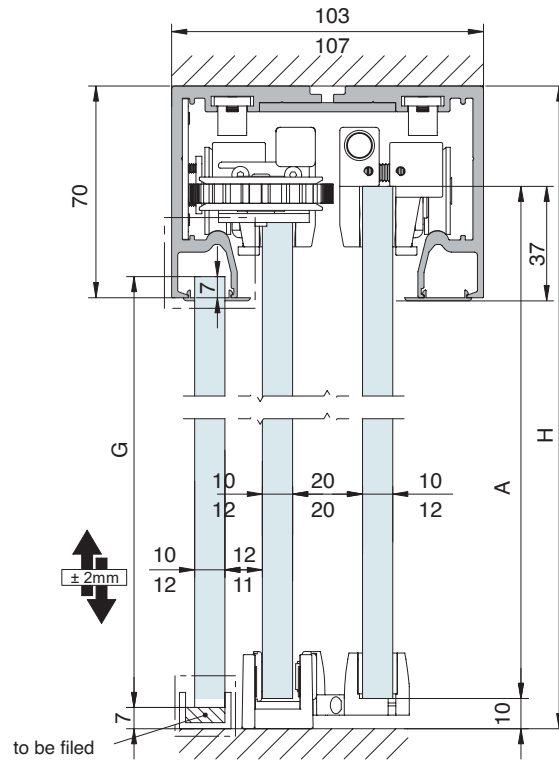
Cross-section

TRACK 1 and 2 Ceiling mount



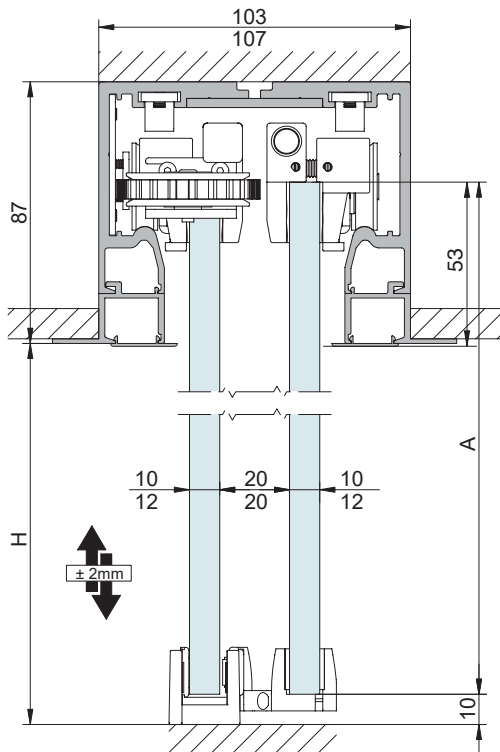
$A = H - 43$

TRACK 1 and 2 Ceiling mount with fixed glass



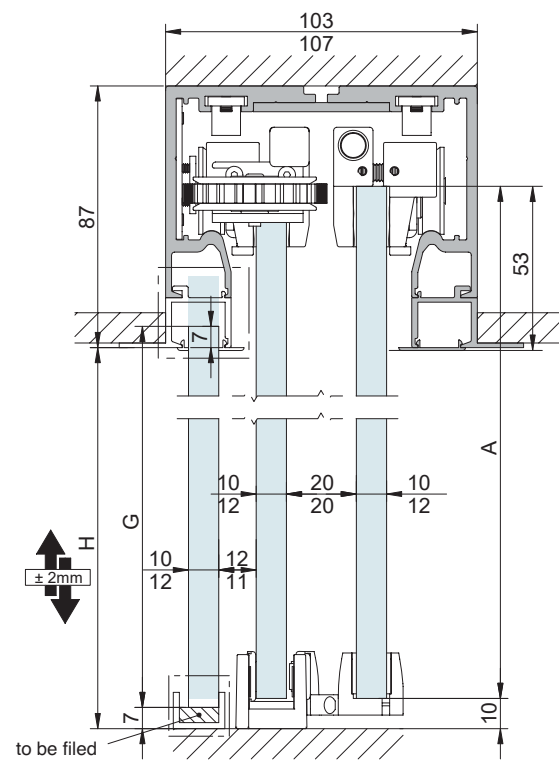
$A = H - 43$ $G = H - 70$

TRACK 1 and 2 False ceiling mount



$A = H + 43$

TRACK 1 and 2 False ceiling mount with fixed glass



$A = H + 43$ $G = H$

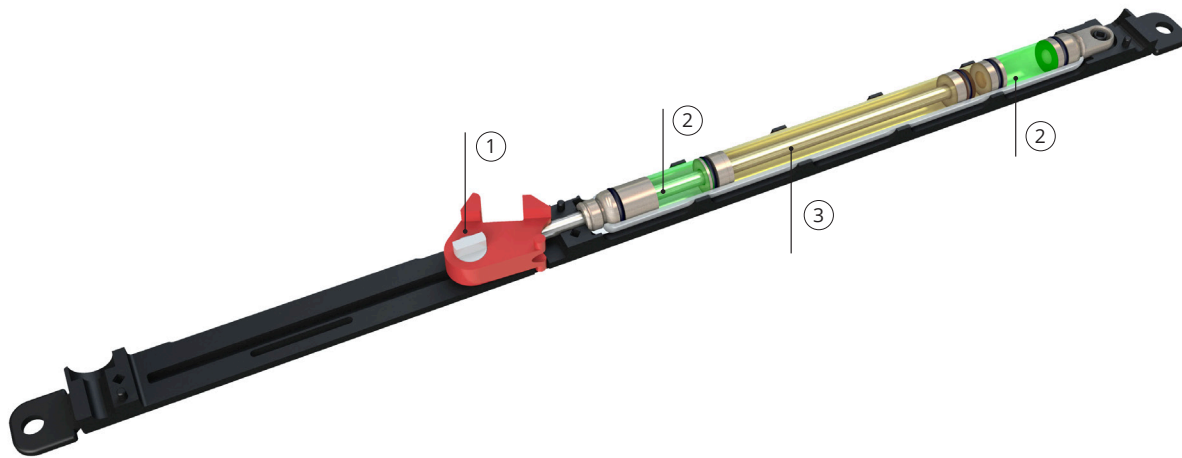


SOFTPRO[®]

TECHNOLOGY by Saheco

The new soft-closing technology from Saheco which combines two nitrogen gas filled pistons and one oil filled piston all within the same unit.

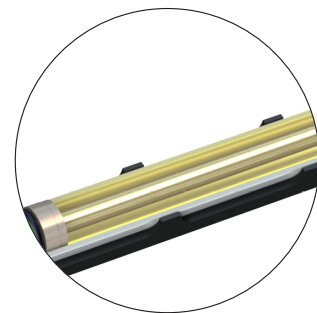
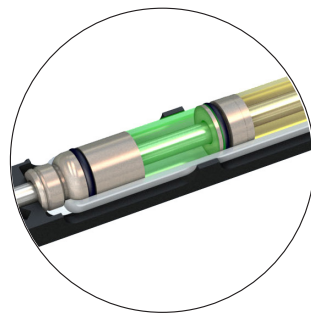
1. Fully adjustable closing speed. **2.** Closing action is progressive and slows down as the door approaches the fully closed position. **3.** Soft Closing. **4.** Anti break feature on the trigger. **5.** Ensures safe braking and prevents the bouncing of the door. **6.** Combines an aesthetically pleasing action with safe soft closing for the last 65mm of the door's travel into the fully closed position for door weights up to 110Kg.



① Anti break trigger

② Nitrogen gas filled pistons

③ Oil filled piston

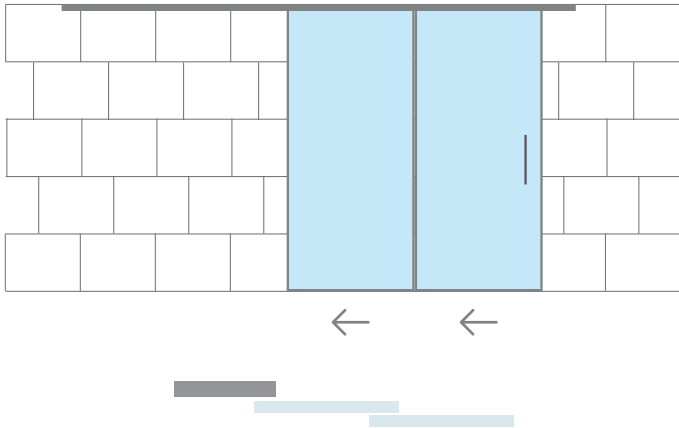




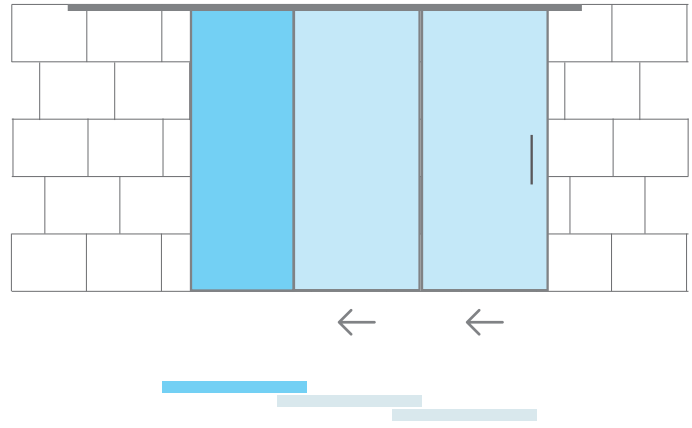
SV-TPRO X110

Installation possibilities

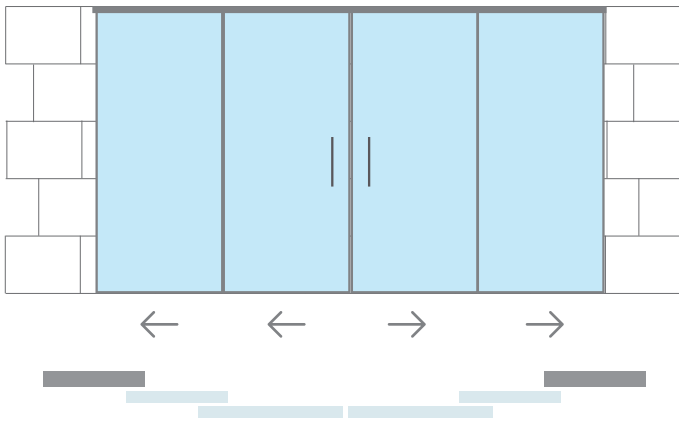
CEILING



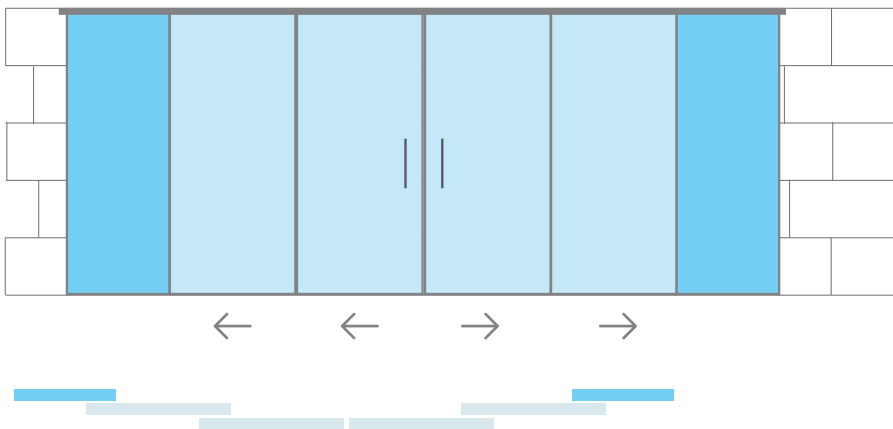
CEILING WITH FIXED PANEL



CEILING 2+2



CEILING WITH FIXED PANEL



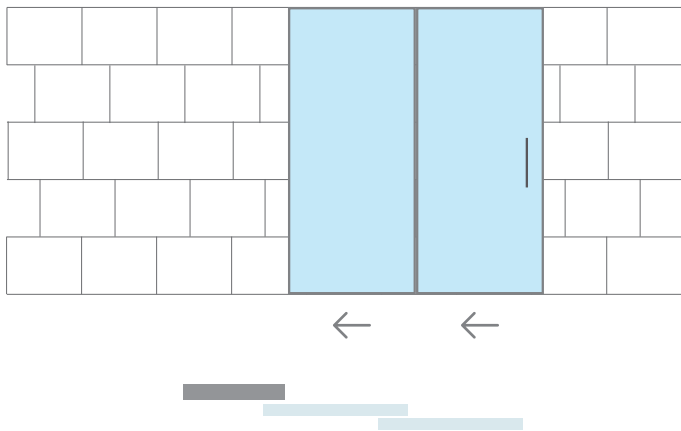
 SLIDING DOOR  FIXED GLASS



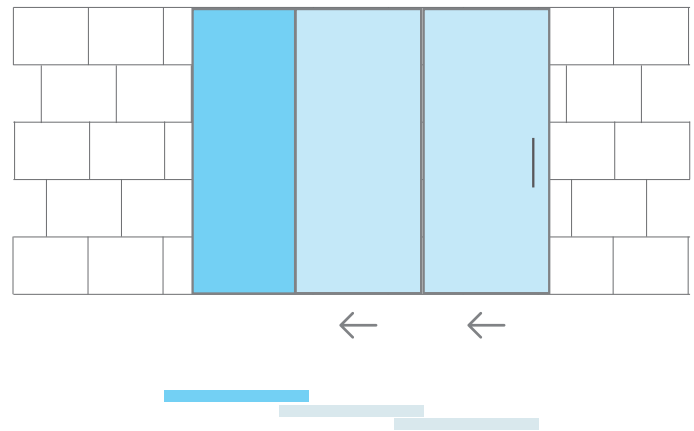
SV-T-PRO X110

Installation possibilities

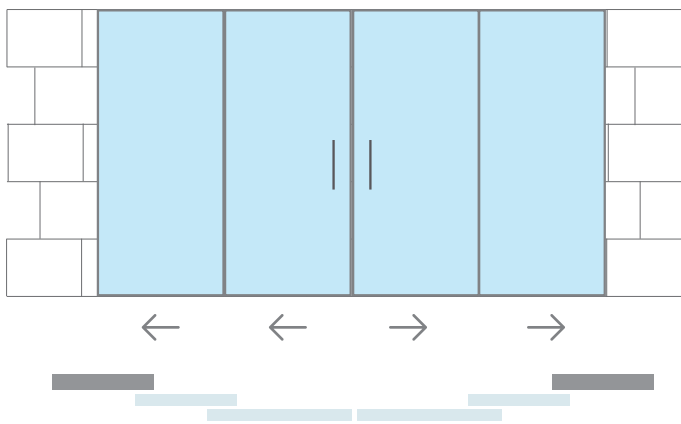
FALSE CEILING



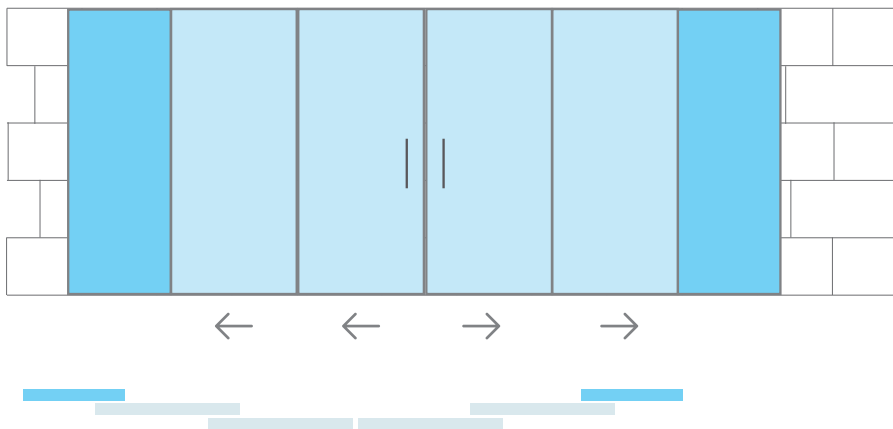
FALSE CEILING WITH FIXED PANEL



FALSE CEILING 2+2



FALSE CEILING 2+2 WITH FIXED PANEL



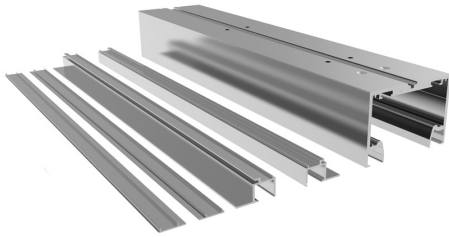
 SLIDING DOOR  FIXED GLASS



SV-T-PRO X110

Components

TRACK OPTIONS



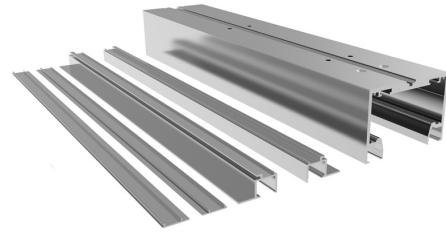
103x70mm



103x87mm

SV-T-PRO X110 - TRACK 1

Top track set with/without fixed glass (10mm).
Ceiling or false ceiling mounting



107x70mm



107x87mm

SV-T-PRO X110 - TRACK 2

Top track set with/without fixed glass (12mm).
Ceiling or false ceiling mounting

BRAKE OPTIONS



SV-T-PRO X110 - SET 1

x2 Retaining stopper. 110kg per panel.
(Standard Stoppers)



SV-T-PRO X110 - SET 10

x2 Double Softpro. 110kg per panel.

Available Finishes

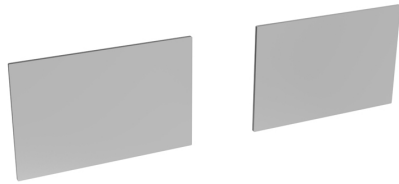
- **SI** Satin anodized aluminium
- **BL** Matt black lacquered aluminium
- **WL** Matt white lacquered aluminium
- **BS** Stainless steel brushed finish aluminium



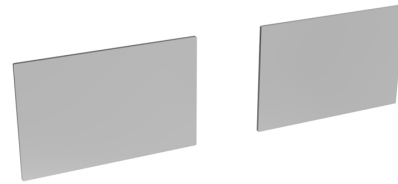
SV-T-PRO X110

Components

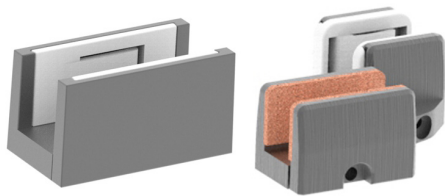
ACCESSORIES



SV-T-PRO X110 - END CAPS TRACK 1
Ceiling or false ceiling mounting



SV-T-PRO X110 - END CAPS TRACK 2
Ceiling or false ceiling mounting



SV-T-PRO-X-FG
Floor Guide set

Available Finishes ● **S I** Satin anodized aluminium ● **BL I** Matt black lacquered aluminium ○ **WL I** Matt white lacquered aluminium
● **BS I** Stainless steel brushed finish aluminium

Multiplo Compact Glass

SV-T-PRO X110



Polígono Industrial de Foradada / 08580
St. Quirze de Besora / Barcelona / Spain
T +34 93 852 96 15
export@saheco.com
saheco.com

Saheco's Exclusive Distributor
Melbourne Office
170 Derrimut Drive Derrimut Vic 3030

Tel. 1300 4 ELITE
sales@eliteglasssolutions.com.au
eliteglasssolutions.com.au

Adelaide Office
7 Manfull St. Melrose Park SA 5039