



Essential Glass

SV-A90



ESSENTIAL GLASS

DOWNLOADS
LIBRARY



SV-A90

Technical Details

ESSENTIAL GLASS - THE HISTORY AND EVOLUTION OF SAHECO IN A RANGE OF SYSTEMS THAT OFFER:

1. Solutions for high quality, suspended, frameless, sliding glass doors of 90kg. 2. Minimalistic aluminium profile that follows the latest architectural trends. 3. Easy Clamp, the most minimalistic solution available, thanks to its compact cover. 4. SV-A90 is a high-quality system consisting of its clamps and rollers mounted on ball bearings to ensure that they can be used smoothly and silently. The track roller assembly is made of high quality zamak. 5. Softbrake available for smooth and impact-free closing. 6. No machining of the glass is required for any of the applications. 7. Applus certified in accordance with the EN 1527 standard.

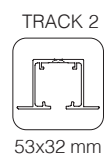
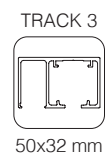
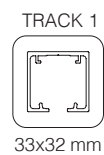




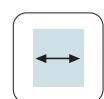
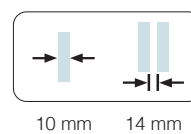
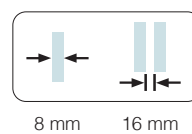
SV-A90

Technical characteristics

Profiles



Specifications



1 Softbrake
MÍN. 600 mm



2 Softbrake
MÍN. 825 mm



SOFTBRAKE
MÁX. 90Kg



BALL BEARING

Weight

90 kg	198 lb
-------	--------

Certificated product

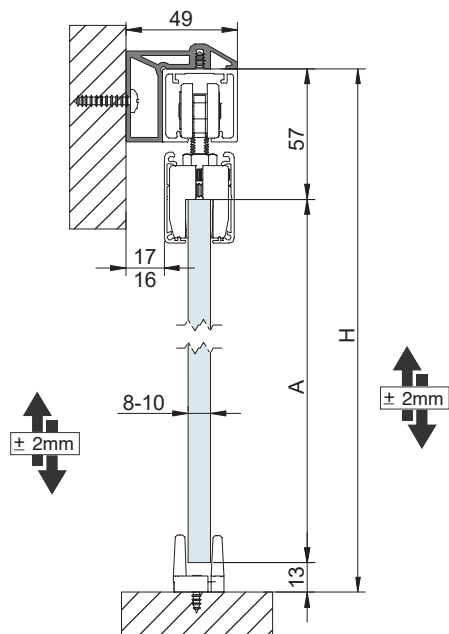




SV-A90

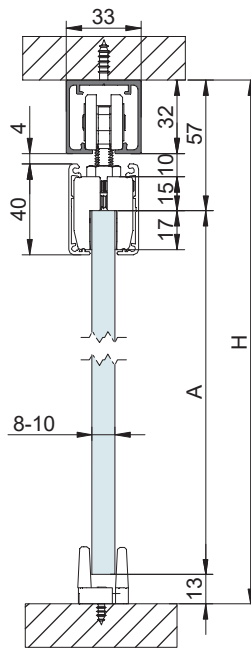
Cross-section

TRACK 1 Wall / Ceiling mount



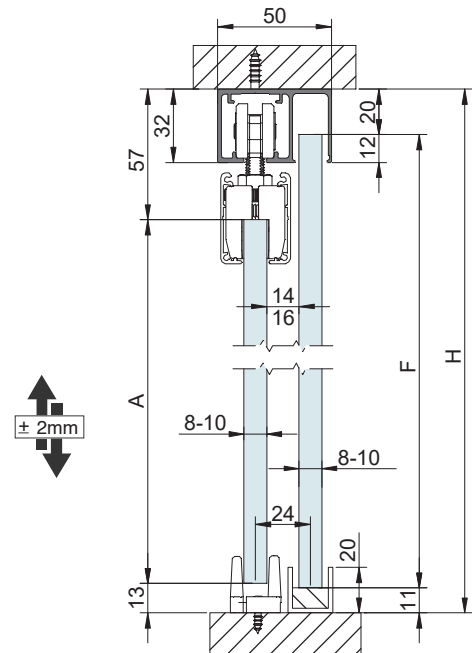
$A = H - 70$

$F = H - 31$



$A = H - 70$

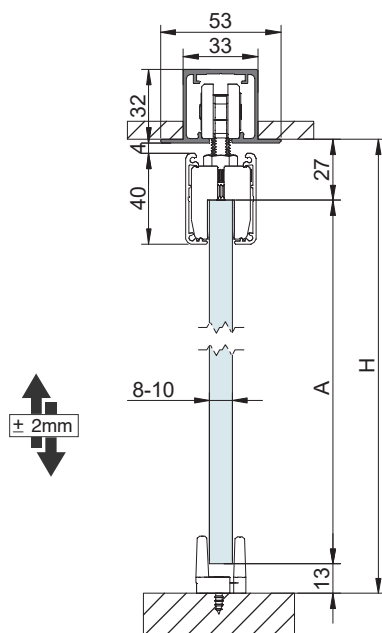
TRACK 3 Wall / Ceiling mount with fixed panel



$A = H - 70$

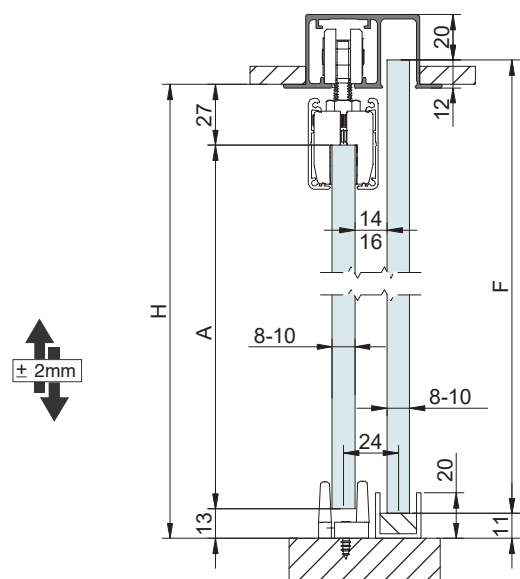
$F = H - 31$

TRACK 2 False ceiling mount



$A = H - 40$

TRACK 4 False ceiling mount with fixed panel



$A = H - 40$

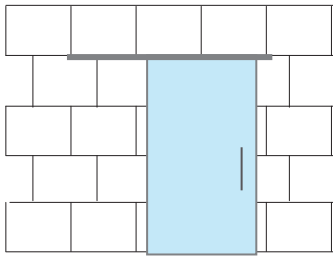
$F = H$



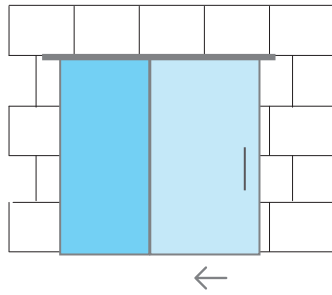
SV-A90

Installation possibilities

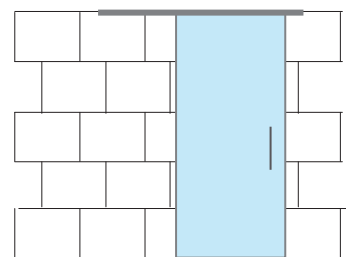
WALL



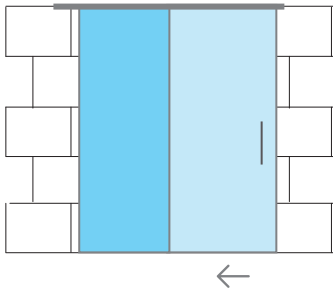
WALL WITH FIXED PANEL



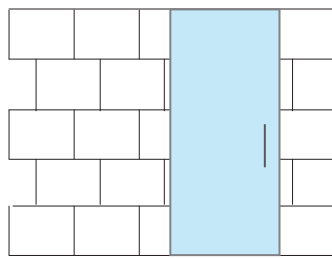
CEILING



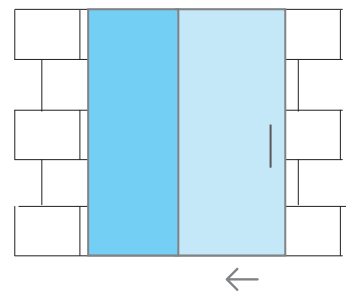
CEILING WITH FIXED PANEL



FALSE CEILING



FALSE CEILING WITH FIXED PANEL



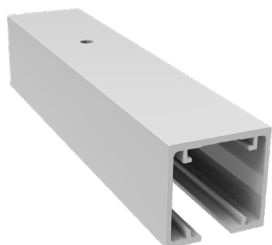
 SLIDING DOOR

 FIXED GLASS

SV-A9

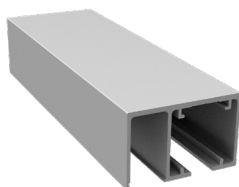
Components

TRACK OPTIONS



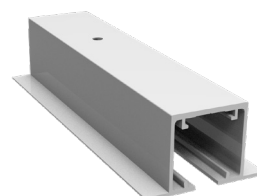
33x32mm

SV-A90 - TRACK 1
Wall / Ceiling mount



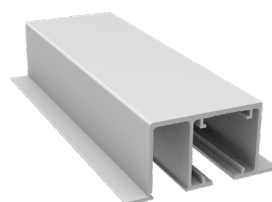
50x32mm

SV-A90 - TRACK 3
Ceiling mount
with fixed glass



53x32mm

SV-A90 - TRACK 2
False Ceiling mount



70x32mm

SV-A90 - TRACK 4
False Ceiling mount
with fixed glass



49x43mm

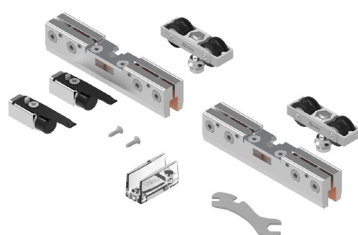
**SV-A90 - SEPARATOR
TRACK 1**
Wall mount



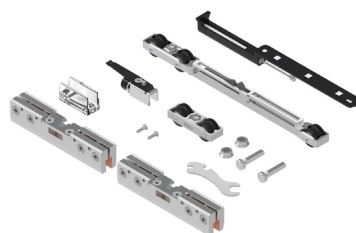
17x4mm

**SV-A90 - TRIM FOR FIXED
GLASS TRACK 3 AND 4**

BRAKE OPTIONS



SV-A90 - SET 1
x2 Retaining stopper
(Standard Stoppers)



SV-A90 - SET 3
x1 Softbrake + x1 Retaining stopper



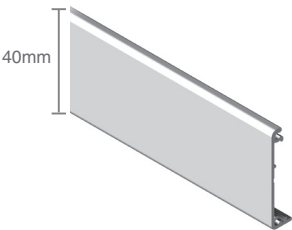
SV-A90 - SET 6
x2 Softbrakes



SV-A90

Components

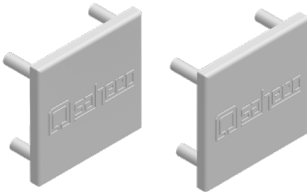
ACCESSORIES



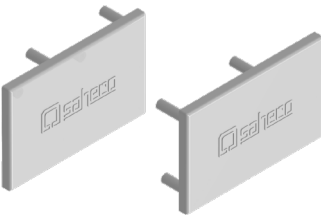
SV-A90 - EASY CLAMP
PELMET COVER



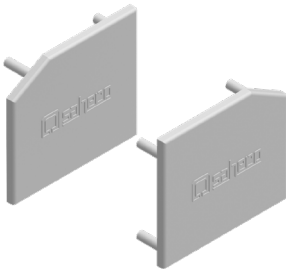
SV-A90 - EASY CLAMP
LATERAL CAPS



SV-A90 - END CAPS TRACK 1
Wall / Ceiling mount



SV-A90 - END CAPS TRACK 3
Wall / Ceiling mount with fixed glass



SV-A90 - END CAPS TRACK 1
WITH SEPARATOR TRACK
Wall mount

Essential Glass

SV-A90



Polígono Industrial de Foradada / 08580
St. Quirze de Besora / Barcelona / Spain
T +34 93 852 96 15
export@saheco.com
saheco.com



Saheco's Exclusive Distributor
Melbourne Office
170 Derrimut Drive Derrimut Vic 3030

Tel. 1300 4 ELITE
sales@eliteglasssolutions.com.au
eliteglasssolutions.com.au

Adelaide Office
7 Manfull St. Melrose Park SA 5039