



Compact Glass
SV-X110



COMPACT GLASS

DOWNLOADS
LIBRARY



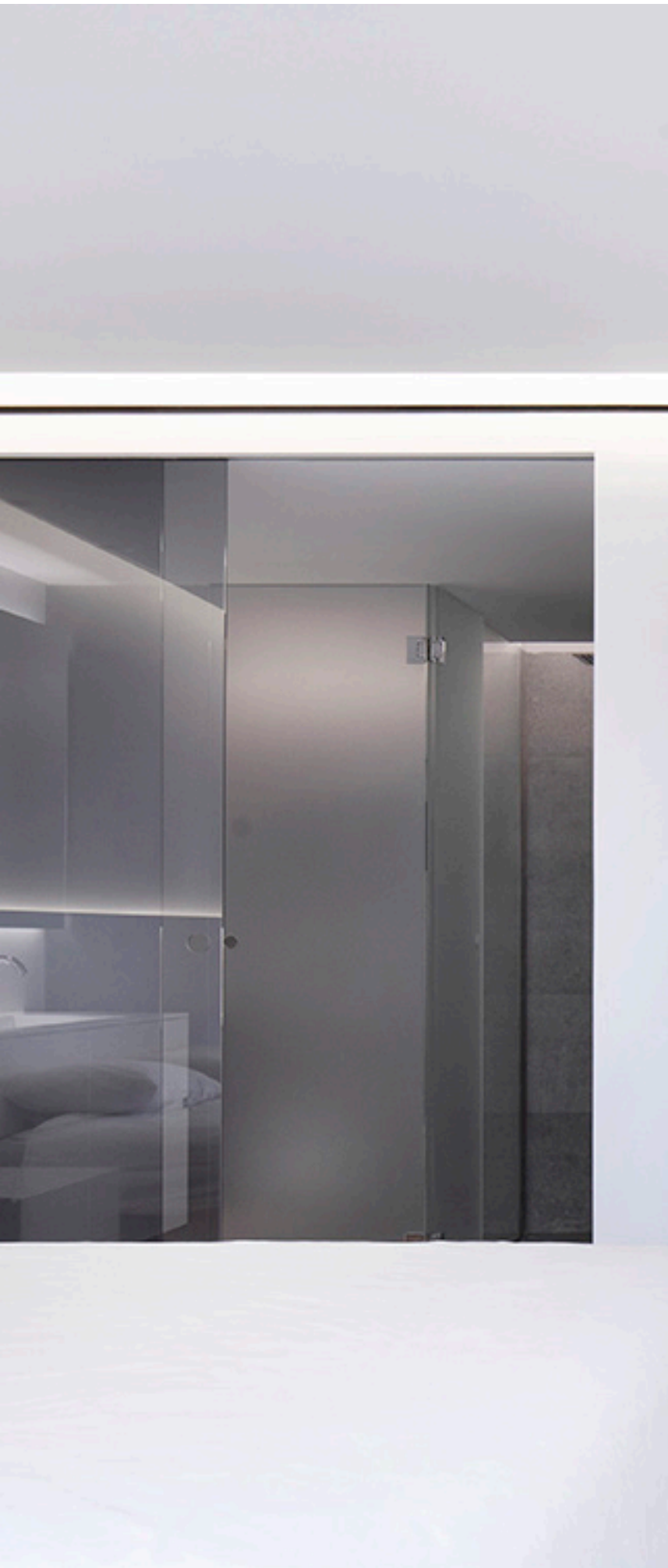
SV-X110

Technical Details

SV-X110 is a compact sliding solution for frameless glass panels, combining latest technology with an attractive minimalist design. The system is quick and easy to install, and is particularly appropriate for domestic and commercial applications, where it integrates seamlessly into any design.

There is a choice between different braking systems: retaining brake and Saheco's new **SOFTPRO**® system, an exceptional solution for a smooth and quiet sliding action with an effective, powerful yet at the same time gentle soft closing and or opening action. In this way a pleasing aesthetic performance is combined with enhanced safety; fingers are protected from becoming trapped on the closing cycle of the glass panel, which itself is also protected from impact damage.






SV-X110

Technical characteristics

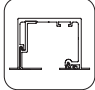
Profiles

TRACK 1




59x60 mm

TRACK 2




76x61 mm

FRAME



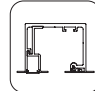
76x61 mm

TRACK 3



59x70 mm

TRACK 4



76x61 mm

Specifications



10-12 mm

FRAME



10 mm



1 Softpro
MIN. 725 mm



Softpro Double
MIN. 1020 mm



MAX. 110kg



KIT AVAILABLE



BALL BEARING

Weight

110 kg

242 lb

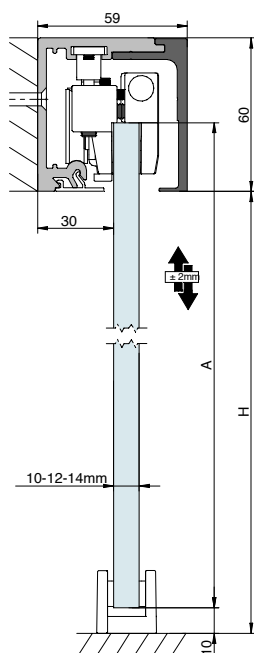
Certificated product



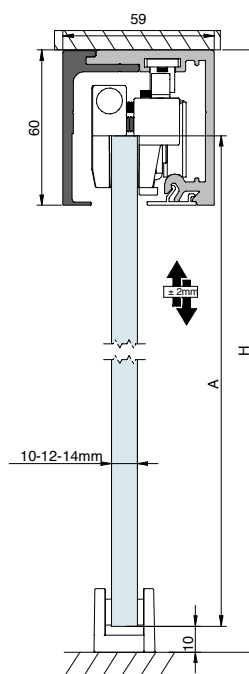
SV-X110

Cross-section

TRACK 1 Wall / Ceiling mount

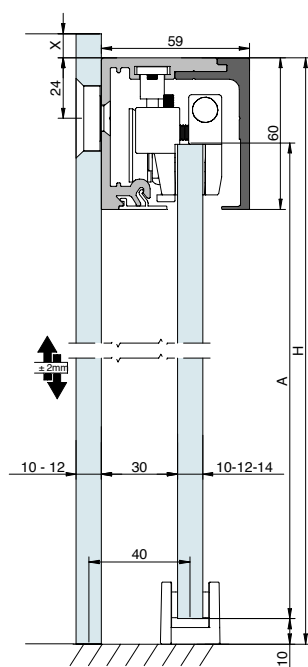


$$A = H + 17$$



$$A = H - 43$$

TRACK 1 Glass wall mount



$$A = H - 43$$

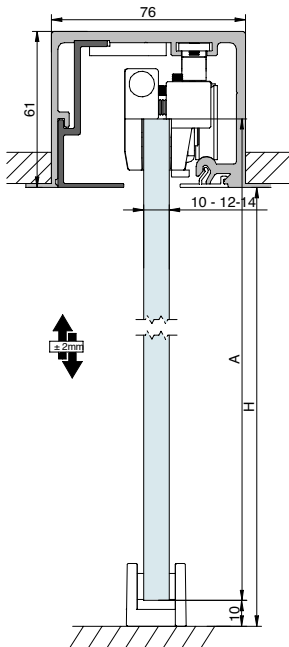
$$G = H + X$$



SV-X110

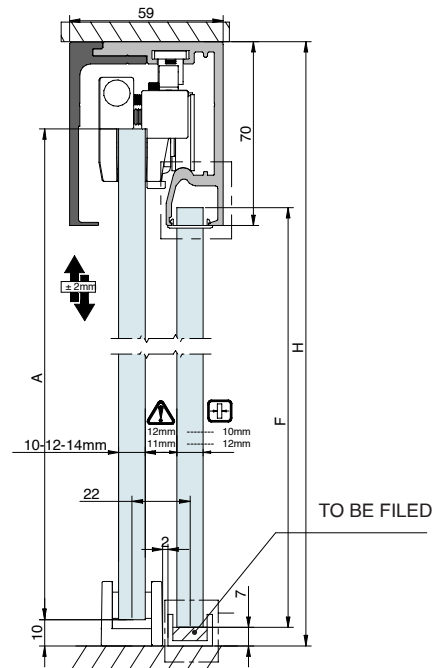
Cross-section

TRACK 2 False ceiling mount



$$A = H + 17$$

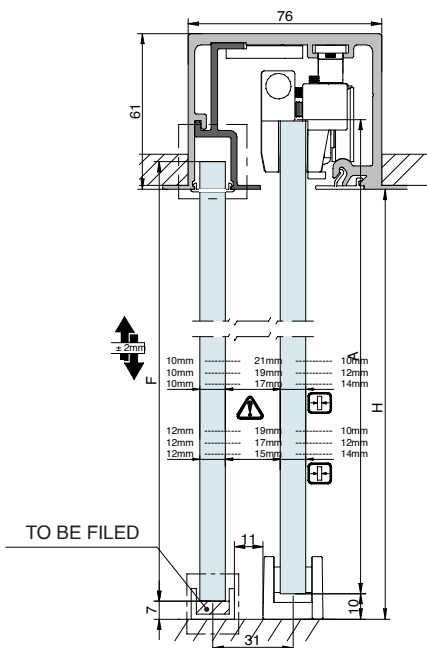
TRACK 3 Wall / Ceiling mount with fixed panel



$$A = H - 43$$

$$F = H - 70$$

TRACK 4 False ceiling mount with fixed panel



$$A = H + 17$$

$$F = H + 4$$

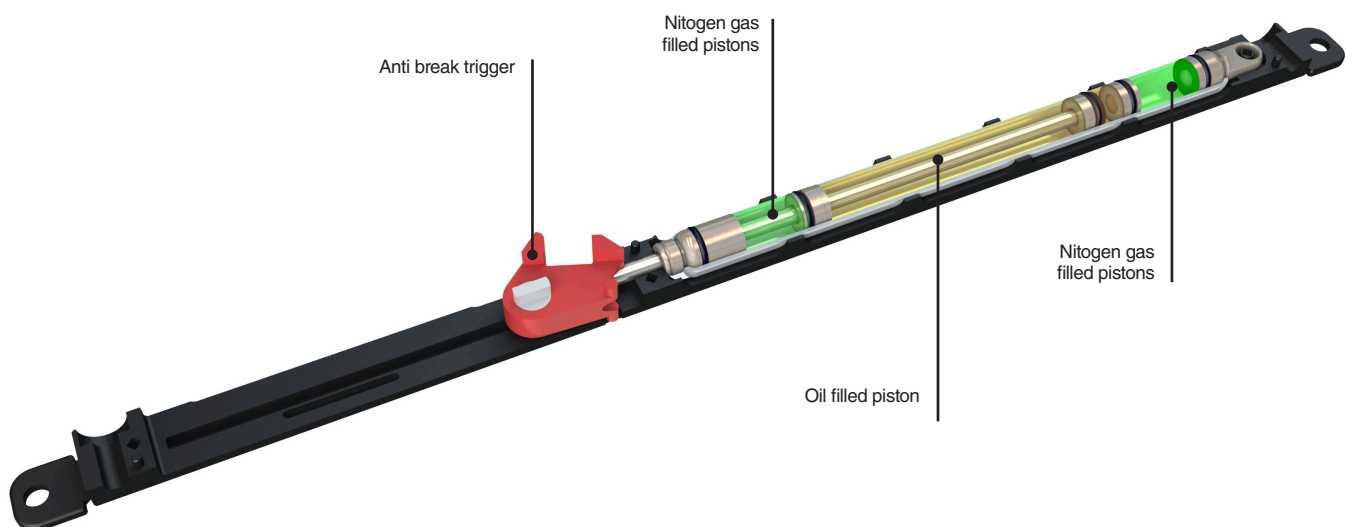


SOFTPRO[®]

TECHNOLOGY by Saheco

The new soft-closing technology from Saheco which combines two nitrogen gas filled pistons and one oil filled piston all within the same unit.

- Fully adjustable closing speed
- Closing action is progressive and slows down as the door approaches the fully closed position
- Soft Closing
- Anti break feature on the trigger
- Ensures safe braking and prevents bouncing of the door.
- Combines an aesthetically pleasing action with safe soft closing for door

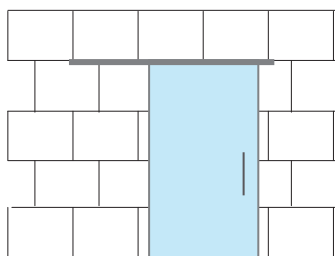




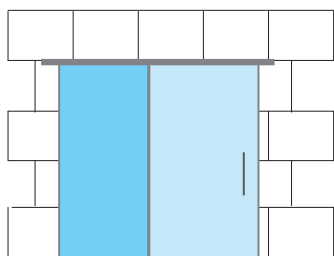
SV-X110

Installation possibilities

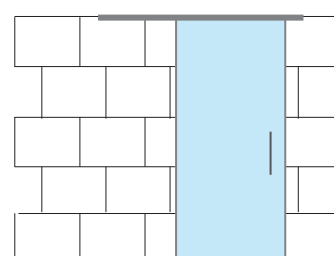
WALL



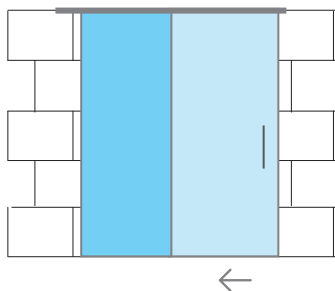
WALL WITH FIXED PANEL



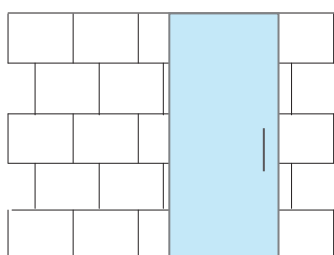
CEILING



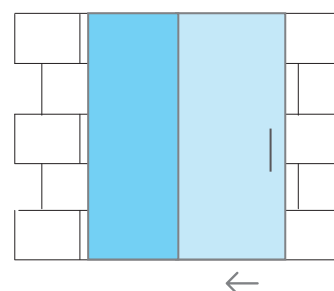
CEILING WITH FIXED PANEL



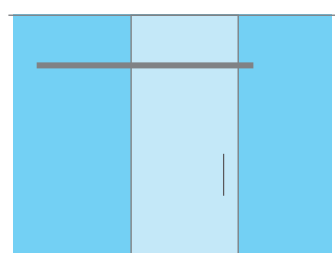
FALSE CEILING



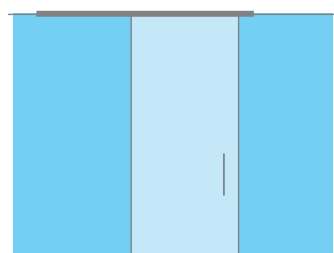
FALSE CEILING WITH FIXED PANEL



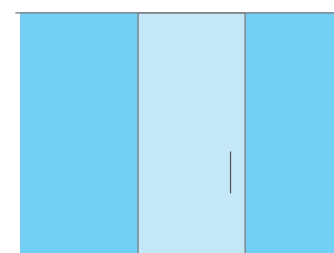
GLASS WALL



CEILING WITH FIXED PANEL



FALSE CEILING WITH FIXED PANEL



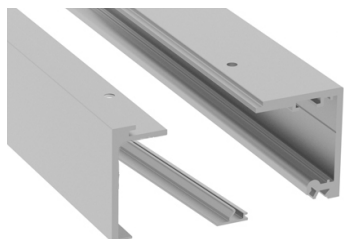
 SLIDING DOOR

 FIXED GLASS

SV-X110

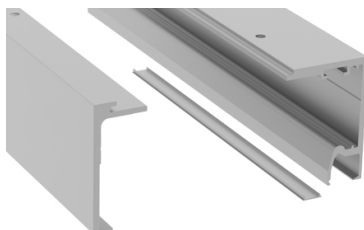
Components

TRACK OPTIONS



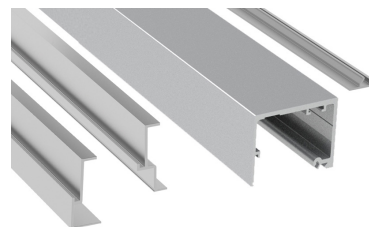
59x60mm

SV-X110 - TRACK 1
Wall / Ceiling mount



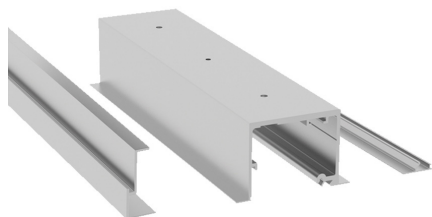
59x70mm

SV-X110 - TRACK 3
Wall / Ceiling mount
with fixed panel



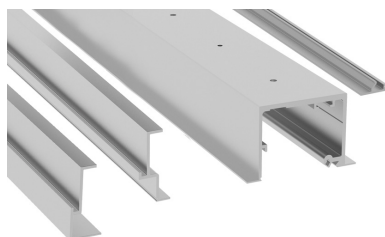
76x61mm

SV-X110 - FRAME TRACK
Wall / Ceiling mount
with / without fixed panel



76x61mm

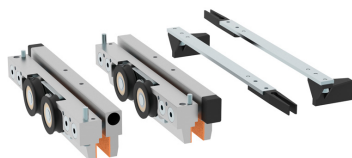
SV-X110 - TRACK 2
Wall / Ceiling mount
with fixed panel



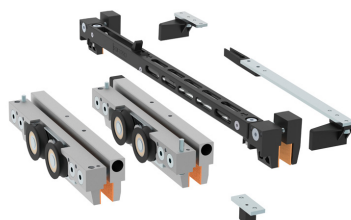
76x61mm

SV-X110 - TRACK 4
False Ceiling mount
with fixed panel

BRAKE OPTIONS



SV-X110 - SET 1
x2 Retaining stopper
(Standard Stoppers)



SV-X110 - SET 8
x1 Retaining stopper + x1 Softpro



SV-X110 - SET 10
x1 Double Softpro

Available Finishes

● **SI** | Satin anodized aluminium

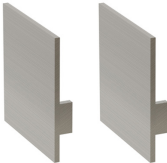
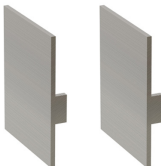
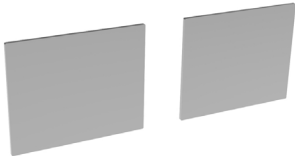

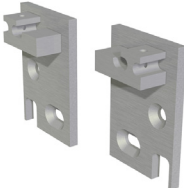
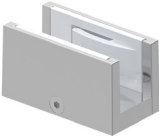
● **BL** | Matt black lacquered aluminium

○ **WL** | Matt white lacquered aluminium



SV-X110

Components

ACCESSORIES		
		
<p>SV-X110 - END CAPS TRACK 1 Wall / Ceiling mount</p>	<p>SV-X110 - END CAPS TRACK 3 Wall / Ceiling mount with fixed panel</p>	<p>SV-X70 - END CAPS FRAME TRACK Wall / Ceiling mount with / without fixed panel</p>
		
<p>SV-X-GF Glass Fixing</p>	<p>SV-X-WB Wall Fixing Brackets</p>	<p>SV-X-FG Floor Guide</p>

FRAME ACCESSORY

SV-X70 / X110 Frame Accessory

Technical Details

Frame family offers a perimeter frame for glass panels. It is compatible with X70 / X110 of the Compact Glass family by Saheco. With Frame, you can transform your sliding glass doors giving to your residence or commerce an elegant, modern and minimalist look. Suitable for glass panels of 10mm thickness and 70 to 110 kg per panel. It is offered in three finishes: Matt black lacquered aluminium, Matt white lacquered aluminium and matt silver anodized aluminum.

Profiles



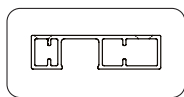
76x61 mm



10x10mm



19x10mm



39x10mm



17x12mm

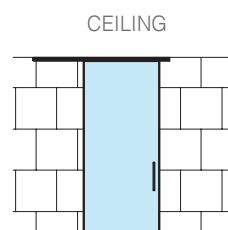




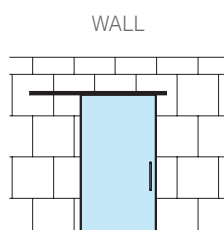
SV-X70 / X110 FRAME ACCESSORY

Installation Possibilities

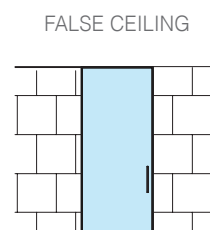
PERIMETER FRAME SET



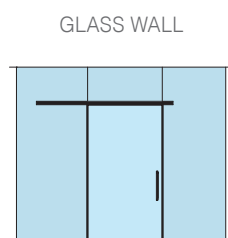
A



A

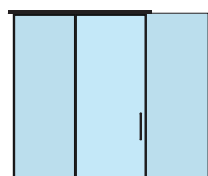


A



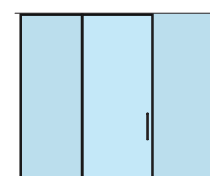
A

CEILING WITH FIXED GLASS



A + C *

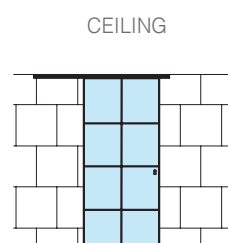
FALSE CEILING WITH FIXED GLASS



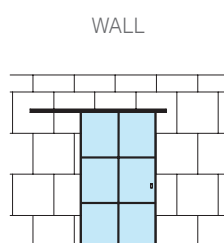
A + C

* A+C Option only with Top track set for Frame accessory

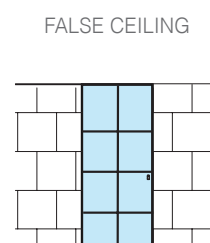
INTERNAL DIVISION SET



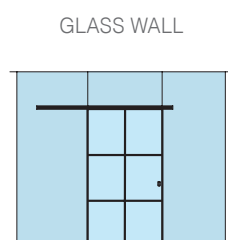
A + B



A + B

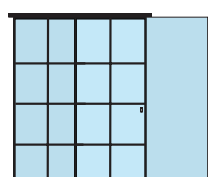


A + B



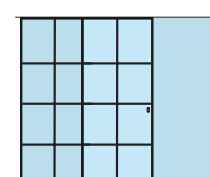
A + B

CEILING WITH FIXED GLASS



A + B + C

FALSE CEILING WITH FIXED GLASS



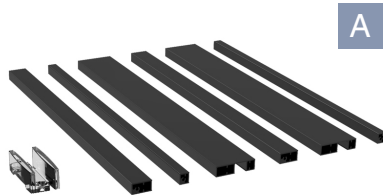
A + B + C



SV-X70 / X110 FRAME ACCESSORY

Components

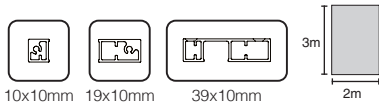
KITS



A

SV-X-FRAME 2

Perimeter frame set for sliding door



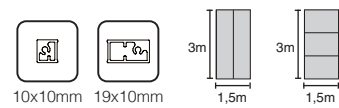
10x10mm 19x10mm 39x10mm



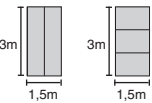
B

SV-X-FRAME 1

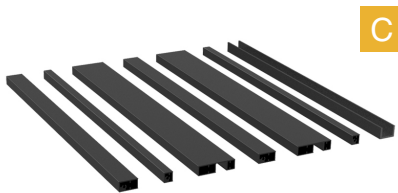
Internal division set 3m



10x10mm 19x10mm



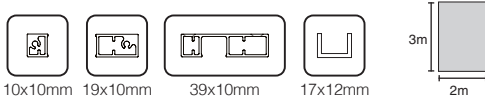
(Add more sets according to design)



C

SV-X-FRAME 3

Perimeter frame for fixed glass. Compatible with Frame track and FT fixed glass track



10x10mm 19x10mm 39x10mm 17x12mm



Frame handles

Compact Glass

SV-X110 + Frame Accessory



Polígono Industrial de Foradada / 08580
St. Quirze de Besora / Barcelona / Spain
T +34 93 852 96 15
export@saheco.com
saheco.com



Saheco's Exclusive Distributor
Melbourne Office
170 Derrimut Drive Derrimut Vic 3030

Tel. 1300 4 ELITE
sales@eliteglasssolutions.com.au
eliteglasssolutions.com.au

Adelaide Office
7 Manfull St. Melrose Park SA 5039